



Avseal® II Nose Assembly Instructions

Genesis®, 07220, 73200, AV10 and T10 Tools

Safety Rules

This technical datasheet must be read with particular attention to the safety rules and operating instructions listed in the Genesis®, 07220, 73200, AV10 and T10 Instruction Manuals, by any person fitting or operating the Avseal® II nose assemblies and hand tools.

Intent of Use

The Avseal® II nose assemblies in combination with the Genesis®, 07220, 73200, AV10 and T10 tools are designed for placing Avdel® Avseal® II breakstem fasteners only. The correct placing tool and nose assembly must be selected for each fastener size as shown in the tables on pages 2 to 7.

IMPORTANT

The tools and nose assemblies must be used in accordance with the safety rules and fitting instructions contained within this datasheet and the tool instruction manuals. The placing of fasteners not included in this datasheet could have a detrimental impact on the working life of the tool and nose assemblies and could invalidate the warranty.

The tables on pages 2 to 7 provide a full list of part numbers for the nose tips, nose assemblies and base tools required to place each Avseal® II size. These tables should be used to select and order the correct placing equipment.

Please note that there are two types of Avseal® II, the STANDARD range (details provided in the tables on page 2) and the LOW PRESSURE range (details provided in the tables on page 3) each requiring specific nose equipment for a given product size.

For the fitting and servicing instructions for each nose assembly refer to the page number provided in the tables on pages 4 to 8.

IMPORTANT

Nose assemblies do NOT include nose tips. Nose tips must be ordered separately.

Avseal® II Standard Range Nose Equipment Part Numbers

INSERT SIZE (mm)	NOSE TIP		Nose Assy Part No.	Page	Tool Type	Basic Tool Part No.
	EXTENSION	PART No.				
4	1mm	71219-11346	71213-16100	5	Genesis nG1 Removable Bottle	71203-02000
	2mm	71210-16106			Genesis nG1 Fixed Bottle	71204-02000
	8mm	71210-16110			Genesis nG2 Removable Bottle	71213-02000
					Genesis nG2 Fixed Bottle *	71214-02000
					Genesis nG2s Removable Bottle	71401-02000
					Genesis nG2s Fixed Bottle	71404-02000
5	1mm	71219-11347	71213-16100	5	Genesis nG1 Removable Bottle	71203-02000
	2mm	71210-16107			Genesis nG1 Fixed Bottle	71204-02000
	8mm	71210-16111			Genesis nG2 Removable Bottle	71213-02000
					Genesis nG2 Fixed Bottle*	71214-02000
					Genesis nG2s Removable Bottle	71401-02000
6	FLUSH	71210-16104	71213-16100	5	Genesis nG2 Removable Bottle	71213-02000
	1mm	71219-11348			Genesis nG2 Fixed Bottle	71214-02000
	2mm	71210-16108			Genesis nG2s Removable Bottle	71401-02000
	8mm	71210-16112	71210-16100	4	Genesis nG2s Fixed Bottle*	71404-02000
					Genesis nG3 Removable Bottle	71223-02000
					Genesis nG3 Fixed Bottle	71234-02000
6.5	FLUSH	71210-16114	71213-16100	5	Genesis nG2 Removable Bottle	71213-02000
	1mm	71210-16117			Genesis nG2 Fixed Bottle	71214-02000
	2mm	71210-16115			Genesis nG2s Removable Bottle	71401-02000
	8mm	7121016116	71210-16100	4	Genesis nG2s Fixed Bottle*	71404-02000
					Genesis nG3 Removable Bottle	71223-02000
7	FLUSH	71210-16105	71213-16100	5	Genesis nG2 Removable Bottle	71213-02000
	1mm	71219-11349			Genesis nG2 Fixed Bottle*	71214-02000
	2mm	71210-16109			Genesis nG2s Removable Bottle	71401-02000
	8mm	71210-16113	71210-16100	4	Genesis nG2s Fixed Bottle	71404-02000
					Genesis nG3 Removable Bottle	71223-02000
					Genesis nG3 Fixed Bottle	71234-02000
8	FLUSH	71220-16102	71220-16100	4	Genesis nG3 Removable Bottle	71223-02000
	1mm	71229-11350			Genesis nG3 Fixed Bottle	71234-02000
	2mm	71220-16103			Genesis nG4 Removable Bottle	71233-02000
	8mm	71220-16104			Genesis nG4 Fixed Bottle*	71234-02000
9	FLUSH	71230-16102	71230-15800	4	Genesis nG4 Removable Bottle	71233-02000
	1mm	71239-11351			Genesis nG4 Fixed Bottle*	71234-02000
	2mm	71230-16104				
	8mm	71230-16106				
10	FLUSH	71230-16103	71230-16100	4	Genesis nG4 Removable Bottle	71233-02000
	1mm	71239-11352			Genesis nG4 Fixed Bottle*	71234-02000
	2mm	71230-16105				
	8mm	71230-16107				
11	FLUSH	07220-06402	07220-06600	6	07220	07220-00200
	1mm	07220-06408			73200	73200-02000
	2mm	07220-06403				
	8mm	07220-06404				
12	FLUSH	07220-06502	07220-06700	6	07220	07220-00200
	1mm	07220-06511			73200	73200-02000
	2mm	07220-06504				
	8mm	07220-06506				

* PREFERRED BASE TOOL OPTION FOR AVSEAL® SIZE

nGenesis® 'complete tool numbers' comprise: base tool, nose assembly and nose tip.

Avseal® II Low Pressure/Automotive Range Nose Equipment Part Numbers

INSERT SIZE (mm)	NOSE TIP		Nose Assy Part No.	Page	Tool Type	Basic Tool Part No.
	EXTENSION	PART No.				
8	FLUSH	71220-16102	71220-16100	4	Genesis nG3 Removable Bottle Genesis nG3 Fixed Bottle Genesis nG4 Removable Bottle Genesis nG4 Fixed Bottle*	71223-02000 71234-02000 71233-02000 71234-02000
	1mm	71229-11350				
	2mm	71220-16103				
	8mm	71220-16104				
9	FLUSH	71220-16105	71220-16100	4	Genesis nG3 Removable Bottle Genesis nG3 Fixed Bottle Genesis nG4 Removable Bottle Genesis nG4 Fixed Bottle*	71223-02000 71234-02000 71233-02000 71234-02000
	1mm	71220-16121				
	2mm	71220-16106				
	8mm	71220-16107				
10	FLUSH	71230-16109	71230-15800	4	Genesis nG4 Removable Bottle Genesis nG4 Fixed Bottle*	71233-02000 71234-02000
	1mm	71230-16118				
	2mm	71230-16112				
	8mm	71230-16115				
11	FLUSH	71230-16110	71230-16100	4	Genesis nG4 Removable Bottle Genesis nG4 Fixed Bottle*	71233-02000 71234-02000
	1mm	71230-16119				
	2mm	71230-16113				
	8mm	71230-16116				
12	FLUSH	71230-16111	71230-16100	4	Genesis nG4 Removable Bottle Genesis nG4 Fixed Bottle*	71233-02000 71234-02000
	1mm	71230-16120				
	2mm	71230-16114				
	8mm	71230-16117				
13	FLUSH	07220-06405	07220-06600	6	07220 73200	07220-00200 73200-02000
	1mm	07220-06409				
	2mm	07220-06406				
	8mm	07220-06407				
14	FLUSH	07220-06508	07220-06700	6	07220 73200	07220-00200 73200-02000
	1mm	07220-06512				
	2mm	07220-06509				
	8mm	07220-06510				
14 FLANGED	FLUSH	07220-06508	07220-06700	6	07220	07220-00200
16	FLUSH	73411-05008	73411-05000	7	T10	73411-02000
	1mm	73411-05011	73430-05000	7	AV10	73430-02000
	2mm	73411-05009	07220-06800	6	73200	73200-02000
	8mm	73411-05010			7 bar air inlet pressure required	
16 FLANGED	FLUSH	73411-05008	73411-05000	7	T10	73411-02000
			73430-05000	7	AV10	73430-02000
18	FLUSH	73411-05208	73411-05200	7	T10 AV10	73411-02000 73430-02000
	1mm	73411-05215				
	2mm	73411-05209				
	8mm	73411-05210				
19 FLANGED	FLUSH	73411-05008	73411-05000	7	T10	73411-02000
			73430-05000	7	AV10	73430-02000
			07220-06800	6	73200	73200-02000
					7 bar air inlet pressure required	
20	FLUSH	73411-05408	73411-05400	7	T10	73411-02000
	1mm	73411-05413				
	2mm	73411-05409				
	8mm	73411-05410				
22 FLANGED	FLUSH Jaw Release	78030-03609	73411-05000	7	T10	73411-02000
			73430-05000	7	AV10	73430-02000

*** PREFERRED BASE TOOL OPTION FOR AVSEAL® SIZE**

nGenesis® 'complete tool numbers' comprise: base tool, nose assembly and nose tip.

Genesis® Nose Assemblies - 71210-16100, 71220-16100, 71230-15800 and 71230-16100

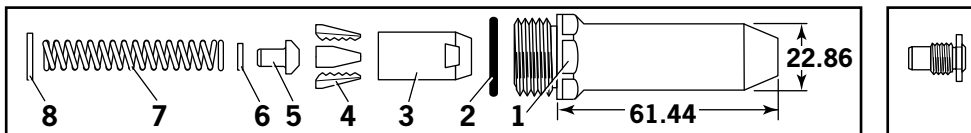
IMPORTANT
The air supply must be disconnected when fitting or removing nose assemblies.

NOSE ASSEMBLY part n° 71210-16100		
ITEM	DESCRIPTION	PART N°
1	NOSE CASING	07340-00306
2	'O' RING	07003-00067
3	JAW HOUSING	07340-00304
4	JAWS	71210-16101
5	JAW SPREADER	07498-04502
6	BUFFER	71210-05001
7	SPRING	07500-00418
8	LOCKING RING	07340-00327

NOSE ASSEMBLY part n° 71220-16100		
ITEM	DESCRIPTION	PART N°
1	NOSE CASING	07340-00306
2	'O' RING	07003-00067
3	JAW HOUSING	07612-02003
4	JAWS	71220-16120
5	JAW SPREADER	07498-04502
6	BUFFER	07498-03003
7	SPRING	07500-00418
8	LOCKING RING	07340-00327

NOSE ASSEMBLY part n° 71230-15800		
ITEM	DESCRIPTION	PART N°
1	NOSE CASING	07340-00306
2	'O' RING	07003-00067
3	JAW HOUSING	07612-02003
4	JAWS	07612-02002
5	JAW SPREADER	07498-04502
6	BUFFER	07498-03003
7	SPRING	07500-00418
8	LOCKING RING	07340-00327

NOSE ASSEMBLY part n° 71230-16100		
ITEM	DESCRIPTION	PART N°
1	NOSE CASING	07340-00306
2	'O' RING	07003-00067
3	JAW HOUSING	07612-02003
4	JAWS	71230-16101
5	JAW SPREADER	07498-04502
6	BUFFER	07498-03003
7	SPRING	07500-00418
8	LOCKING RING	07340-00327



Fitting Instructions

Item numbers in **bold** refer to nose assembly components in the tables and diagram above.

- Lightly coat Jaws **4** with Moly Lithium grease*.
- Drop Jaws **4** into Jaw Housing **3**.
- Insert Jaw Spreader **5** into Jaw Housing **3**.
- Locate Buffer **6** on Jaw Spreader **5**.
- Locate Spring **7** onto Jaw Spreader **5**.
- Fit Locking Ring **8** onto the jaw spreader housing.
- Holding tool pointing down, screw the assembled jaw housing onto the jaw spreader housing and tighten with spanner*.
- Screw the nose tip into Nose Casing **1** and tighten with spanner*.
- Place Nose Casing **1** with 'O' Ring **2** over Jaw Housing **3** and screw onto the tool, tightening with spanner*.

Servicing Instructions

- Nose assemblies should be serviced at weekly intervals. You should hold some stock of all internal components of the nose assembly and nose tips as they will need regular replacement.
- Remove the nose assembly using the reverse procedure to the 'Fitting Instructions'.
- Any worn or damaged part should be replaced.
- Clean and check wear on jaws.
- Ensure that the jaw spreader is not distorted.
- Check that the spring is not distorted.
- Assemble according to fitting instructions.

* Item included in the G2 and G4 Service Kits. For complete list refer to the G2 and G4 instruction manuals.

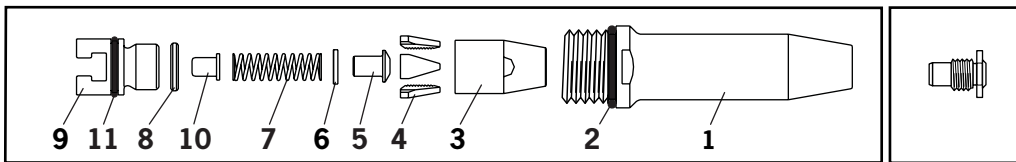
Genesis® nG2 Nose Assembly - 71213-16100

IMPORTANT

The air supply must be disconnected when fitting or removing nose assemblies.

NOSE ASSEMBLY part n° 71213-16100

ITEM	DESCRIPTION	PART N°
1	TAPERED NOSE CASING	71213-00350
2	'O' RING	07003-00067
3	JAW HOUSING - TAPERED	71210-15902
4	JAW	71210-16101
5	JAW SPREADER	07498-04502
6	BUFFER	71210-05001
7	SPRING	07500-00418
8	LOCKING RING	07340-00327
9	JAW SPREADER HOUSING 'T'	71210-20321
10	DETENT SLEEVE	71210-20322
11	'O' RING	07003-00277



Fitting Instructions

Item numbers in **bold** refer to nose assembly components in the table and diagram above.

- Lightly coat Jaws **4** with Moly Lithium grease*.
- Drop Jaws **4** into Jaw Housing **3**.
- Insert Jaw Spreader **5** into Jaw Housing **3**.
- Locate Buffer **6** on Jaw Spreader **5**.
- Locate Spring **7** onto Jaw Spreader **5**.
- Insert Detent Sleeve **10** into Jaw Spreader Housing 'T' **9**.
- Fit Locking Ring **8** onto Jaw Spreader Housing 'T' **9**.
- For tools converted to nose assemblies Type 2 and 3, fit Locking Ring **8** onto Jaw Spreader Housing 'T' **9** attached to the tool.
- Tighten Jaw Housing **3** and assemble components onto Jaw Spreader Housing 'T' **9**.
- Utilising the 'T' section profiles assemble nose assembly onto the tool piston via the Male 'T' Adaptor
- Screw the nose tip into Nose Casing **1** and tighten with a spanner*.
- Place Nose Casing **1** over Jaw Housing **3** and screw onto the tool, tightening with a spanner*.

Servicing Instructions

Nose assemblies should be serviced at weekly intervals. You should hold some stock of all internal components of the nose assembly and nose tips as they will need regular replacement.

- Remove the nose assembly using the reverse procedure to the 'Fitting Instructions'.
- Any worn or damaged parts should be replaced.
- Clean and check wear on jaws.
- Ensure that the Jaw Spreader **5** is not distorted.
- Check Spring **7** is not distorted.
- Assemble according to fitting instructions above.

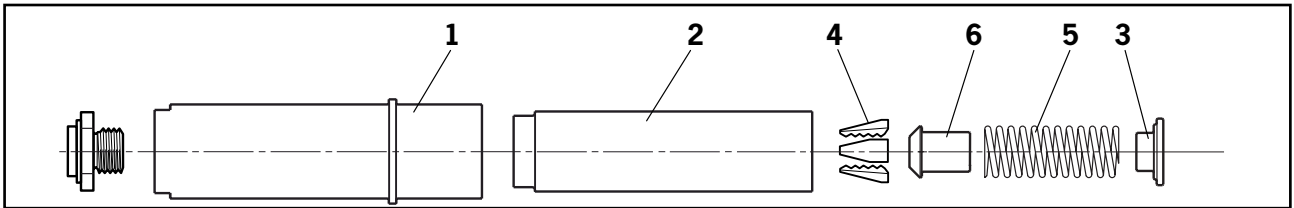
*Refers to items included in the nG2 Service Kit. For complete kit refer to nG2 Instruction Manual.

07220 and 73200 Nose Assemblies – 07220-06600, 07220-06700 and 07220-06800

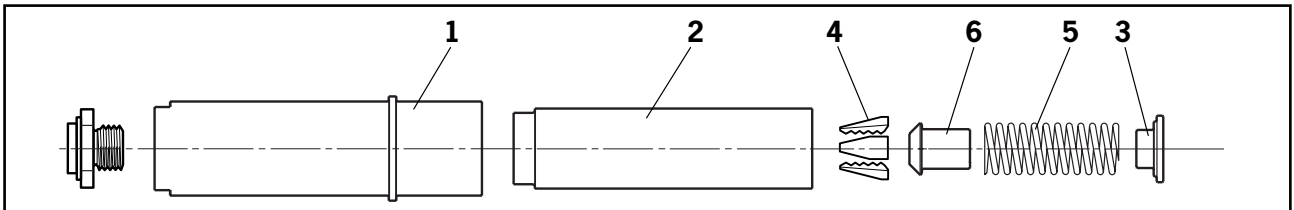
IMPORTANT
The air supply must be disconnected when fitting or removing nose assemblies.

NOSE ASSEMBLY part n° 07220-06600		
ITEM	DESCRIPTION	PART N°
1	NOSE CASING	07220-06601
2	JAW HOUSING	07220-06602
3	SPRING GUIDE	07220-06603
4	JAWS	07220-06401
5	SPRING	07500-02005

NOSE ASSEMBLY part n° 07220-06700		
ITEM	DESCRIPTION	PART N°
1	NOSE CASING	07220-06601
2	JAW HOUSING	07220-06602
3	SPRING GUIDE	07220-06603
4	JAWS	71220-06501
5	SPRING	07500-02005



NOSE ASSEMBLY part n° 07220-06800		
ITEM	DESCRIPTION	PART N°
1	NOSE CASING	07220-06601
2	JAW HOUSING	07220-06602
3	SPRING GUIDE	07220-06301
4	JAWS	07220-06401
5	SPRING	07500-02005
6	JAW SPREADER	07220-06302



Fitting Instructions

Item numbers in **bold** refer to nose assembly components in the tables and diagram above.

- Lightly coat Jaws **4** with Moly Lithium grease.
- Assemble Spring Guides **3** and Spring **5** and stand on end on a flat even surface.
- Balance the three Chuck Jaws **4** on the upper Spring Guide **3**.
- Carefully lower Jaw Housing **2** over the assembled components.
- Holding tool pointing down, screw the assembled jaw housing onto the tool head piston and tighten with spanner.
- Screw the nose tip into Nose Casing **1** and tighten with spanner.

Servicing Instructions

Nose assemblies should be serviced at weekly intervals. You should hold some stock of all internal components of the nose assembly and nose tips as they will need regular replacement.

- Remove the nose assembly using the reverse procedure to the 'Fitting Instructions'.
- Any worn or damaged parts should be replaced.
- Clean and check wear on jaws.
- Check that the spring and spring guides are not distorted.
- Clean and inspect components, renewing worn or damaged items.
- Assemble according to fitting instructions above.

AV10 and T10 Nose Assemblies – 73411-05000, 73411-05200, 73411-05400, 73430-0500 and 73430-05200

IMPORTANT

The air supply must be disconnected when fitting or removing nose assemblies.

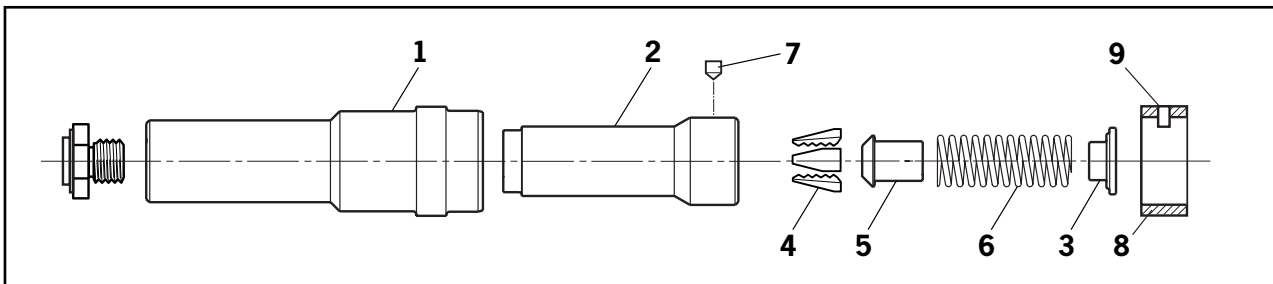
NOSE ASSEMBLY part n° 73411-05000		
ITEM	DESCRIPTION	PART N°
1	NOSE CASING	73411-05007
2	JAW HOUSING	73411-05005
3	SPRING GUIDE	07220-06301
4	JAWS	73411-05001
5	JAW SPREADER	07220-06302
6	SPRING	07220-06305
7	COLLET LOCK	73411-05004
8	COLLET ADAPTOR	73411-03206
9	PLUG	73411-03207

NOSE ASSEMBLY part n° 73411-05200		
ITEM	DESCRIPTION	PART N°
1	NOSE CASING	73411-05007
2	JAW HOUSING	73411-05005
3	SPRING GUIDE	07220-06301
4	JAWS	73411-05201
5	JAW SPREADER	07220-06302
6	SPRING	07220-06305
7	COLLET LOCK	73411-05004
8	COLLET ADAPTOR	73411-03206
9	PLUG	73411-03207

NOSE ASSEMBLY part n° 73411-05400		
ITEM	DESCRIPTION	PART N°
1	NOSE CASING	73411-05007
2	JAW HOUSING	73411-05005
3	SPRING GUIDE	07220-06301
4	JAWS	73411-05401
5	JAW SPREADER	07220-06302
6	SPRING	07220-06305
7	COLLET LOCK	73411-05004
8	COLLET ADAPTOR	73411-03206
9	PLUG	73411-03207

NOSE ASSEMBLY part n° 73430-05000		
ITEM	DESCRIPTION	PART N°
1	NOSE CASING	73430-05007
2	JAW HOUSING	73430-05005
3	SPRING GUIDE	07220-06301
4	JAWS	73411-05001
5	JAW SPREADER	07220-06302
6	SPRING GUIDE	07220-06302
7	COLLET LOCK	73430-05004

NOSE ASSEMBLY part n° 73430-05200		
ITEM	DESCRIPTION	PART N°
1	NOSE CASING	73430-05007
2	JAW HOUSING	73430-05005
3	SPRING GUIDE	07220-06301
4	JAWS	73411-05201
5	JAW SPREADER	07220-06302
6	SPRING GUIDE	07220-06301
7	COLLET LOCK	73430-05004



AV10 and T10 Nose Assemblies – 73411-05000, 73411-05200 and 73411-05400 and 73430-05200

Fitting Instructions

Item numbers in **bold** refer to nose assembly components in the tables and diagram above.

- Lightly coat Jaws **4** with Moly Lithium grease.
- Drop Jaws **4** into Jaw Housing **2**.
- Insert Jaw Spreader **5** into Jaw Housing **2**.
- Locate Spring **6** on Jaw Spreader **5**.
- Locate Spring Guide **3** onto Spring **6**.
- Holding tool pointing down, screw the assembled jaw housing onto the piston rod until it is flush with the end of the collet adaptor and tighten with a spanner.
- Insert Collet Lock **7** into Jaw Housing **2** ensuring that it sits below the outer surface of the jaw housing.
- Screw the nose tip into Nose Casing **1** and tighten with a spanner.
- Slide the Nose Casing **1** over the jaw housing and screw into the anvil adaptor until it is firm.
- There is a locking 'O' ring which will create a resistance to the final few turns of the nose casing. It is imperative that the nose casing be hand tightened up against the rear locking face.

Servicing Instructions

Nose assemblies should be serviced at weekly intervals. You should hold some stock of all internal components of the nose assembly and nose tips as they will need regular replacement.

- Remove the nose assembly using the reverse procedure to the 'Fitting Instructions'.
- Any worn or damaged parts should be replaced.
- Clean and check wear on jaws.
- Ensure that the jaw spreader is not distorted.
- Check that the spring and spring guide is not distorted.
- Assemble according to fitting instructions above.

Holding your world together®

Find your closest STANLEY Engineered Fastening location on www.StanleyEngineeredFastening.com/contact



For an authorized distributor nearby please check www.StanleyEngineeredFastening.com/econtact/distributors

Manual Number	Issue	C/N
07900-00840	K	14/072

STANLEY
Engineered Fastening

www.StanleyEngineeredFastening.com

© 2013 Stanley Black & Decker, Inc., Rev. 01.2014

Avbolt®, Avdel®, Avdelok®, Avex®, Avinox®, Avseal®, Avtainer®, Hemlok®, Maxlok® and Monobolt® are trademarks of Avdel UK Limited. The names and logos of other companies mentioned herein may be trademarks of their respective owners. Data shown is subject to change without prior notice as a result of continuous product development and improvement policy. Your local Avdel representative is at your disposal should you need to confirm latest information.

Avdel UK Limited
Pacific House, 2 Swiftfields
Welwyn Garden City, Hertfordshire AL7 1LY
Tel. +44 (0)1707 292-000 Fax -199
enquiries2@sbdinc.com