

## Genesis® G4 for 1/4" og 3/16" Avdelok®

### Monteringsanvisning for Genesis® nG4/G4/G4HD 3/16 og 1/4 Avdelok® munnstykkeenheter

#### VIKTIG

#### LUFTTILFØRSELEN MÅ ALLTID FRAKOBLES FØR DEMONTERING STARTES

Følgende deler behøves **IKKE**, og må fjernes fra grunnverktøyet før montering av munnstykket fra Avdelok® kan starte. Delenumre finnes ved å referere til verktøymonteringsdiagrammet i den aktuelle håndboken.

71210-02101 Kjeftåpnerhus

71230-02102 Vakuumbhylster

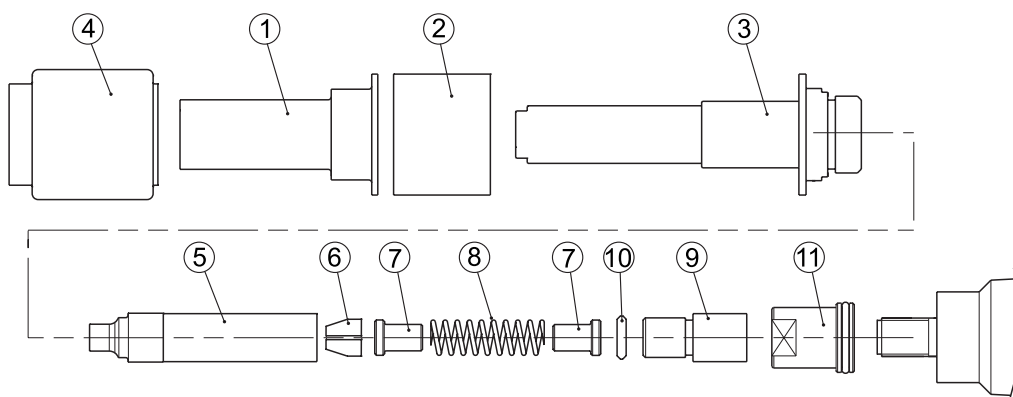
71230-02015 Låsemutter

71210-02104 Forseglingshus

#### Montering av Avdelok® munnstykkeenheter (se produktnummer ( ) oppført i tabellen under)

1. Skru låsemutteren (11) helt inn i stempelet.
2. Skru adapteren (9) helt inn i stempelet før låsemutteren strammes mot den. Sett på friksjonsringen (10).
3. Monter klembakken (6), fjærlederen (7) og fjæren (8) i spennhylsen (5). Dekk kjeften og den interne boringen i spennhylsen med molybdenulfett.
4. Skru spennhylsen på adapteren (9) og stram til.
5. Monter ambolten (3) over spennhylsen og skru i toppdelen.
6. Monter bufferen (2) og ambolthylsteret (1) over ambolten og hold på plass med gummidekselet (4).

**Merknad:** Smør flytende såpe på de indre overflatene for å gjøre det enklere å feste gummidekselet.



#### 1/4 AVDELOK® MUNNSTYKKEENHET 71230-05020

ARTIKKEL	71230-05020 for 6,4 (1/4") Avdelok®	
1	71230-05012	Ambolthylster
2	71230-05014	Buffer
3	71230-05021	Ambolt
4	71230-05013	Gummideksel
5	07200-02201	Spennhylse
6	07220-02302	Klembakke
7	07220-02104	Fjærleder
8	07220-02103	Fjær
9	07610-00501	Spennhylseadapter
10	07610-02004	Friksjonsring
11	71233-20200	Låsemutter

#### 3/16 AVDELOK® MUNNSTYKKEENHET 71230-05010

ARTIKKEL	71230-05010 for 4,8 (3/16") Avdelok®	
1	71230-05012	Ambolthylster
2	71230-05014	Buffer
3	71230-05011	Ambolt
4	71230-05013	Gummideksel
5	07200-02101	Spennhylse
6	07220-02102	Klembakke
7	07220-02104	Fjærleder
8	07220-02103	Fjær
9	07610-00501	Spennhylseadapter
10	07610-02004	Friksjonsring
11	71233-20200	Låsemutter



Since 1922



Avdel® iForm™

Since 1 936

2010



Our Technology, Your Success

**AUSTRALIA****Infastech (Australia) Pty Ltd.**

891 Wellington Road  
Rowville  
Victoria 3178  
Tel: +61 3 9765 6400  
Fax: +61 3 9765 6445  
info@infastech.com.au

**CANADA****Avdel Canada Limited**

1030 Lorimar Drive  
Mississauga  
Ontario L5S 1R8  
Tel: +1 905 364 0664  
Fax: +1 905 364 0678  
infoAvdel-Canada@infastech.com

**KINA****Infastech (China) Ltd.**

RM 1708, 17/F., Nanyang Plaza,  
57 Hung To Rd., Kwun Tong  
Hong Kong  
Tel: +852 2950 0631  
Fax: +852 2950 0022  
infochina@infastech.com

**FRANKRIKE****Avdel France S.A.S.**

33 bis, rue des Ardennes  
BP4  
75921 Paris Cedex 19  
Tel: +33 (0) 1 4040 8000  
Fax: +33 (0) 1 4208 2450  
AvdelFrance@infastech.com

**TYSKLAND****Avdel Deutschland GmbH**

Klusriede 24  
30851 Langenhagen  
Tel: +49 (0) 511 7288 0  
Fax: +49 (0) 511 7288 133  
AvdelDeutschland@infastech.com

**INDIA****Infastech Fastening Technologies****India Private Limited**

Plot No OZ-14, Hi Tech SEZ,  
SIPCOT Industrial Growth Center,  
Oragadam, Sriperumbudur Taluk,  
Kanchipuram District,  
602105 Tamilnadu  
Tel: +91 44 4711 8001  
Fax: +91 44 4711 8009  
info-in@infastech.com

**ITALIA****Avdel Italia S.r.l.**

Viale Lombardia 51/53  
20047 Brugherio (MI)  
Tel: +39 039 289911  
Fax: +39 039 2873079  
vendite@infastech.com

**JAPAN****Infastech Kabushiki Kaisha**

Center Minami SKY,  
3-1 Chigasaki-Chuo, Tsuzuki-ku,  
Yokohama-city,  
Kanagawa Prefecture  
Japan 224-0032  
Tel: +81 45 947 1200  
Fax: +81 45 947 1205  
info@infastech.co.jp

**MALAYSIA****Infastech (Malaysia) Sdn Bhd**

Lot 63, Persiaran Bunga Tanjung 1,  
Senawang Industrial Park  
70400 Seremban  
Negeri Sembilan  
Tel: +606 676 7168  
Fax: +606 676 7101  
info-my@infastech.com

**SINGAPORE****Infastech (Singapore) Pte Ltd.**

31 Kaki Bukit Road 3  
#05-03/06 Techlink  
Singapore, 417818  
Tel: +65 6372 5653  
Fax: +65 6744 5643  
info-sg@infastech.com

**SØR-KOREA****Infastech (Korea) Ltd.**

212-4, Suyang-Ri,  
Silchon-Eup, Kwangju-City,  
Kyunggi-Do, Korea, 464-874  
Tel: +82 31 798 6340  
Fax: +82 31 798 6342  
info@infastech.co.kr

**SPANIA****Avdel Spain S.A.**

C/ Puerto de la Morcuera, 14  
Poligono Industrial Prado Overa  
Ctra. de Toledo, km 7,8  
28919 Leganés (Madrid)  
Tel: +34 91 3416767  
Fax: +34 91 3416740  
ventas@infastech.com

**TAIWAN****Infastech/Tri-Star Limited**

No 269-7, Baodong Rd,  
Guanmiao Township,  
71841 Tainan County,  
Taiwan, R.O.C  
Tel: +886 6 596 5798 (ext 201)  
Fax: +886 6 596 5758  
info-tw@infastech.com

**STORBRIANNIA****Avdel UK Limited**

Pacific House  
2 Swiftfields  
Watchmead Industrial Estate  
Welwyn Garden City  
Hertfordshire AL7 1LY  
Tel: +44 (0) 1707 292000  
Fax: +44 (0) 1707 292199  
enquiries@infastech.com

**USA****Avdel USA LLC**

614 NC Highway 200 South  
Stanfield, North Carolina 28163  
Tel: +1 704 888 7100  
Fax: +1 704 888 0258  
infoAvdel-USA@infastech.com

Databladnr.	Utgave	Endringsnotatnr.
07900-00795	B	07/288
	B2	11/018

[www.avdel-global.com](http://www.avdel-global.com)  
[www.infastech.com](http://www.infastech.com)

Autosert® (equipment), Avbolt®, Avdel®, Avdelmate®, Avdel TX2000®, Avdelok®, Avex®, Avibulb®, Avinox®, Avinut™, Avlug®, Avmatic®, Avplas®, Avseal®, Avsert®, Avtainer®, Avtronic®, Briv®, Bulbex®, Chobert®, Eurosert®, Fastriv®, Finsert®, Genesis®, Grovit®, Hemlok®, Hexsert®, Holding your world together®, Hydra®, Interlock®, Klamp-Tite®, KlampTite KTR®, Kvex®, Maxlok®, Monobolt®, Monobulb®, Neobolt®, Nutsert®, Nutsert SQ®, Portariv®, Rivmatic®, Rivscrew®, Speed Fastening®, Squarecert®, Stavex®, Supersert®, Thin Sheet Nutsert®, Titan®, T-Lok®, TLR®, TSN®, TX2000®, Versa-Nut®, Viking® og Viking 360® er varemerker tilhørende Avdel UK Limited. Infastech™ og Our Technology, Your Success™ er varemerker tilhørende Infastech Intellectual Properties Pte Ltd. Navn og logoer til andre firmaer nevnt heri kan være varemerker tilhørende respektive eiere. Dette dokumentet er kun ment som informasjon. Infastech kommer ikke med noen garantier, verken uttrykt eller antydning, i dette dokumentet. Data vist i dokumentet kan endres uten foregående varsel som et resultat av kontinuerlige produktutviklings- og produktforbedringsstrategier. Din lokale Avdel-representant står til din disposisjon dersom du skulle ha behov for å bekrefte den nyeste informasjonen.

## Genesis® G4 for 1/4" & 3/16" Avdelok®

### Fitting Instructions for Genesis® nG4/G4/G4HD 3/16 & 1/4 Avdelok® Nose Assemblies

**IMPORTANT**

**THE AIR SUPPLY MUST ALWAYS BE DISCONNECTED BEFORE ANY DISMANTLING IS ATTEMPTED**

The following parts are **NOT** required and must be removed from the basic tool before assembly of the Avdelok® nose equipment can commence. Part numbers can be identified by referring to the tool assembly diagram in the appropriate tool manual.

71210-02101 Jaw Spreader Housing

71230-02102 Vacuum Sleeve

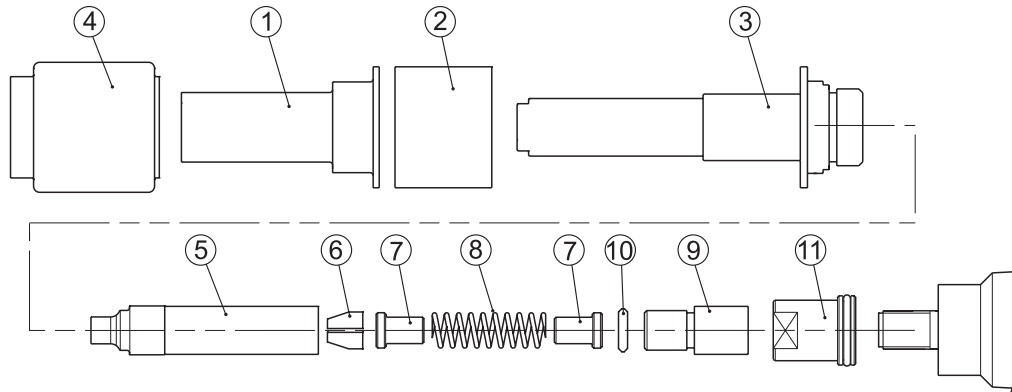
71230-02015 Locknut

71210-02104 Seal Housing

**Assembly of Avdelok® Nose Assembly** (Refer to Item Numbers ( ) listed in the table below)

1. Screw Locknut (11) fully onto the piston.
2. Screw Adaptor (9) fully onto the piston before tightening the locknut against it. Fit Friction Ring (10).
3. Assemble Chuck jaws (6), Spring Guide (7) and Spring (8) into the Chuck Collet (5). Lightly coat the Jaws and the internal bore of the Chuck Collet with Molybdenum grease.
4. Screw the Chuck Collet assembly onto the Adaptor (9) and tighten.
5. Assemble the Anvil (3) over the Chuck Collet and screw into the head Assembly.
6. Assemble the Buffer (2) and the Anvil Casing (1) over the Anvil and retain in place with the Rubber Shroud (4).

**Note:** For ease of fitting the Rubber Shroud, smear liquid soap on its internal surface.



**1/4 AVDELOK® NOSE ASSEMBLY 71230-05020**

ITEM	71230-05020 for 6.4 (1/4") Avdelok®	
<b>1</b>	71230-05012	Anvil Casing
<b>2</b>	71230-05014	Buffer
<b>3</b>	71230-05021	Anvil
<b>4</b>	71230-05013	Rubber Shroud
<b>5</b>	07200-02201	Chuck Collet
<b>6</b>	07220-02302	Chuck Jaws
<b>7</b>	07220-02104	Spring Guide
<b>8</b>	07220-02103	Spring
<b>9</b>	07610-00501	Chuck Collet Adapter
<b>10</b>	07610-02004	Friction Ring
<b>11</b>	71233-20200	Locknut

**3/16 AVDELOK® NOSE ASSEMBLY 71230-05010**

ITEM	71230-05010 for 4.8 (3/16") Avdelok®	
<b>1</b>	71230-05012	Anvil Casing
<b>2</b>	71230-05014	Buffer
<b>3</b>	71230-05011	Anvil
<b>4</b>	71230-05013	Rubber Shroud
<b>5</b>	07200-02101	Chuck Collet
<b>6</b>	07220-02102	Chuck Jaws
<b>7</b>	07220-02104	Spring Guide
<b>8</b>	07220-02103	Spring
<b>9</b>	07610-00501	Chuck Collet Adapter
<b>10</b>	07610-02004	Friction Ring
<b>11</b>	71233-20200	Locknut

**AUSTRALIA**

**Infastech (Australia) Pty Ltd.**

891 Wellington Road  
 Rowville  
 Victoria 3178  
 Tel: +61 3 9765 6400  
 Fax: +61 3 9765 6445  
 info@infastech.com.au

**CANADA**

**Avdel Canada Limited**

1030 Lorimar Drive  
 Mississauga  
 Ontario L5S 1R8  
 Tel: +1 905 364 0664  
 Fax: +1 905 364 0678  
 infoAvdel-Canada@infastech.com

**CHINA**

**Infastech (China) Ltd.**

RM 1708, 17/F., Nanyang Plaza,  
 57 Hung To Rd., Kwun Tong  
 Hong Kong  
 Tel: +852 2950 0631  
 Fax: +852 2950 0022  
 infochina@infastech.com

**FRANCE**

**Avdel France S.A.S.**

33 bis, rue des Ardennes  
 BP4  
 75921 Paris Cedex 19  
 Tel: +33 (0) 1 4040 8000  
 Fax: +33 (0) 1 4208 2450  
 AvdelFrance@infastech.com

**GERMANY**

**Avdel Deutschland GmbH**

Klusriede 24  
 30851 Langenhagen  
 Tel: +49 (0) 511 7288 0  
 Fax: +49 (0) 511 7288 133  
 AvdelDeutschland@infastech.com

**INDIA**

**Infastech Fastening Technologies**

**India Private Limited**

Plot No OZ-14, Hi Tech SEZ,  
 SIPCOT Industrial Growth Center,  
 Oragadam, Sriperumbudur Taluk,  
 Kanchipuram District,  
 602105 Tamilnadu  
 Tel: +91 44 4711 8001  
 Fax: +91 44 4711 8009  
 info-in@infastech.com

**ITALY**

**Avdel Italia S.r.l.**

Viale Lombardia 51/53  
 20047 Brugherio (MI)  
 Tel: +39 039 289911  
 Fax: +39 039 2873079  
 vendite@infastech.com

**JAPAN**

**Infastech Kabushiki Kaisha**

Center Minami SKY,  
 3-1 Chigasaki-Chuo, Tsuzuki-ku,  
 Yokohama-city,  
 Kanagawa Prefecture  
 Japan 224-0032  
 Tel: +81 45 947 1200  
 Fax: +81 45 947 1205  
 info@infastech.co.jp

**MALAYSIA**

**Infastech (Malaysia) Sdn Bhd**

Lot 63, Persiaran Bunga Tanjung 1,  
 Senawang Industrial Park  
 70400 Seremban  
 Negeri Sembilan  
 Tel: +606 676 7168  
 Fax: +606 676 7101  
 info-my@infastech.com

**SINGAPORE**

**Infastech (Singapore) Pte Ltd.**

31 Kaki Bukit Road 3  
 #05-03/06 Techlink  
 Singapore, 417818  
 Tel: +65 6372 5653  
 Fax: +65 6744 5643  
 info-sg@infastech.com

**SOUTH KOREA**

**Infastech (Korea) Ltd.**

212-4, Suyang-Ri,  
 Silchon-Eup, Kwangju-City,  
 Kyunggi-Do, Korea, 464-874  
 Tel: +82 31 798 6340  
 Fax: +82 31 798 6342  
 info@infastech.co.kr

**SPAIN**

**Avdel Spain S.A.**

C/ Puerto de la Morcuera, 14  
 Poligono Industrial Prado Overa  
 Ctra. de Toledo, km 7,8  
 28919 Leganés (Madrid)  
 Tel: +34 91 3416767  
 Fax: +34 91 3416740  
 ventas@infastech.com

**TAIWAN**

**Infastech/Tri-Star Limited**

No 269-7, Baodong Rd,  
 Guanmiao Township,  
 71841 Tainan County,  
 Taiwan, R.O.C  
 Tel: +886 6 596 5798 (ext 201)  
 Fax: +886 6 596 5758  
 info-tw@infastech.com

**UNITED KINGDOM**

**Avdel UK Limited**

Pacific House  
 2 Swiftfields  
 Watchmead Industrial Estate  
 Welwyn Garden City  
 Hertfordshire AL7 1LY  
 Tel: +44 (0) 1707 292000  
 Fax: +44 (0) 1707 292199  
 enquiries@infastech.com

**USA**

**Avdel USA LLC**

614 NC Highway 200 South  
 Stanfield, North Carolina 28163  
 Tel: +1 704 888 7100  
 Fax: +1 704 888 0258  
 infoAvdel-USA@infastech.com

Data Sheet No.	Issue	Change Note No.
07900-00795	B	07/288
	B2	11/018

[www.avdel-global.com](http://www.avdel-global.com)  
[www.infastech.com](http://www.infastech.com)

Autosert® (equipment), Avbolt®, Avdel®, Avdelmate®, Avdel TX2000®, Avdelok®, Avex®, Avibulb®, Avinox®, Avinut™, Avlug®, Avmatic®, Avplas®, Avseal®, Avsert®, Avtainer®, Avtronic®, Briv®, Bulbex®, Chobert®, Eurosert®, Fastriv®, Finsert®, Genesis®, Grovit®, Hemlok®, Hexsert®, Holding your world together®, Hydra®, Interlock®, Klamp-Tite®, KlampTite KTR®, Kvex®, Maxlok®, Monobolt®, Monobulb®, Neobolt®, Nutsert®, Nutsert SQ®, Portariv®, Rivmatic®, Rivscrew®, Speed Fastening®, Squaresert®, Stavex®, Supersert®, Thin Sheet Nutsert®, Titan®, T-Lok®, TLR®, TSN®, TX2000®, Versa-Nut®, Viking® and Viking 360® are trademarks of Avdel UK Limited. Infastech™ and Our Technology, Your Success™ are trademarks of Infastech Intellectual Properties Pte Ltd. The names and logos of other companies mentioned herein may be trademarks of their respective owners. This document is for informational purposes only. Infastech makes no warranties, expressed or implied, in this document. Data shown is subject to change without prior notice as a result of continuous product development and improvement policy. Your local Avdel representative is at your disposal should you need to confirm latest information.