

## Genesis® G4 per Avdelok® da 1/4" e 3/16"

### Istruzioni di montaggio per testate Avdelok® da 3/16 e 1/4 Genesis® nG4/G4/G4HD

#### IMPORTANTE

L'ALIMENTAZIONE DELL'ARIA COMPRESSA DEVE SEMPRE ESSERE STACCATO PRIMA DI TENTARE DI SMONTARE L'ATTREZZO

Le parti che seguono **NON** sono richieste e devono essere rimosse dall'attrezzo di base prima di poter cominciare l'assemblaggio della testata Avdelok®. I codici si possono identificare facendo riferimento al diagramma di assemblaggio dell'attrezzo nell'appropriato manuale dell'attrezzo.

71210-02101 Sede del divaricatore ganasce

71230-02102 Manicotto a depressione

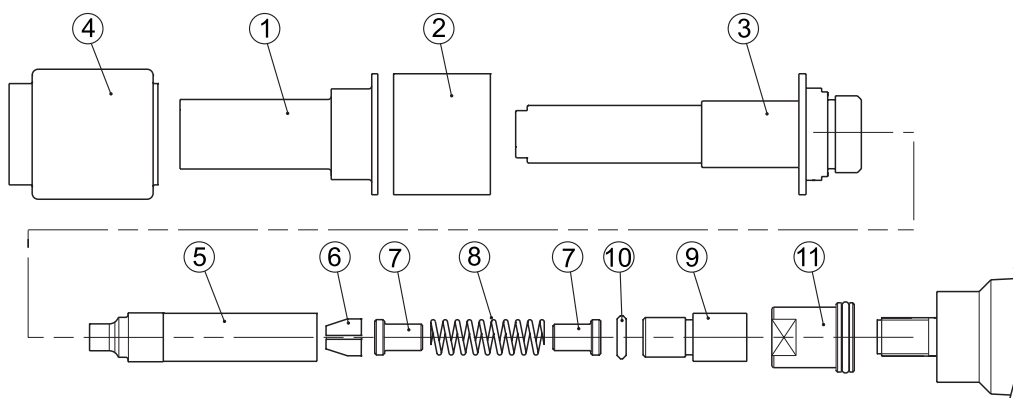
71230-02015 Controdado

71210-02104 Alloggiamento guarnizione

**Assemblaggio della testata Avdelok®** (vedere i codici dei particolari ( ) elencati nella seguente tabella)

1. Avvitare fino in fondo il controdado (11) sul pistone.
2. Avvitare fino in fondo l'adattatore (9) sul pistone prima di serrare il controdado contro lo stesso. Montare l'anello di tenuta (10).
3. Assemblare le ganasce del mandrino (6), la guida della molla (7) e la molla (8) nella pinza mandrino (5). Rivestire le ganasce e il foro interno della pinza mandrino con un leggero strato di grasso Moly Lithium.
4. Avvitare il gruppo pinza mandrino sull'adattatore (9) e serrare.
5. Assemblare l'incudine (3) sulla pinza mandrino e avvitare nel gruppo di testa.
6. Assemblare il cuscinetto (2) e l'involucro dell'incudine (1) sull'incudine e mantenerlo al suo posto con la copertura di gomma (4).

**Nota:** per facilitare il montaggio della copertura di gomma, spalmare del sapone liquido sulla sua superficie interna.



#### TESTATA da 1/4 AVDELOK® 71230-05020

| PARTIC. | 71230-05020 per Avdelok® da 6,4 (1/4") |                               |
|---------|--|-------------------------------|
| 1       | 71230-05012                            | Involucro incudine            |
| 2       | 71230-05014                            | Cuscinetto                    |
| 3       | 71230-05021                            | Incudine                      |
| 4       | 71230-05013                            | Copertura di gomma            |
| 5       | 07200-02201                            | Pinza del mandrino            |
| 6       | 07220-02302                            | Ganasce del mandrino          |
| 7       | 07220-02104                            | Guida molla                   |
| 8       | 07220-02103                            | Molla                         |
| 9       | 07610-00501                            | Adattatore pinza del mandrino |
| 10      | 07610-02004                            | Anello di tenuta              |
| 11      | 71233-20200                            | Controdado                    |

#### TESTATA da 3/16 AVDELOK® 71230-05010

| PARTIC. | 71230-05010 per Avdelok® da 4,8 (3/16") |                           |
|---------|---|---------------------------|
| 1       | 71230-05012                             | Involucro incudine        |
| 2       | 71230-05014                             | Cuscinetto                |
| 3       | 71230-05011                             | Incudine                  |
| 4       | 71230-05013                             | Copertura di gomma        |
| 5       | 07200-02101                             | Pinza mandrino            |
| 6       | 07220-02102                             | Ganasce del mandrino      |
| 7       | 07220-02104                             | Guida molla               |
| 8       | 07220-02103                             | Molla                     |
| 9       | 07610-00501                             | Adattatore pinza mandrino |
| 10      | 07610-02004                             | Anello di tenuta          |
| 11      | 71233-20200                             | Controdado                |



Since 1922

**Avdel® iForm™**

Since 1936

2010



Our Technology, Your Success

**AUSTRALIA****Infastech (Australia) Pty Ltd.**

891 Wellington Road  
Rowville  
Victoria 3178  
Tel: +61 3 9765 6400  
Fax: +61 3 9765 6445  
info@infastech.com.au

**CANADA****Avdel Canada Limited**

1030 Lorimar Drive  
Mississauga  
Ontario L5S 1R8  
Tel: +1 905 364 0664  
Fax: +1 905 364 0678  
infoAvdel-Canada@infastech.com

**CINA****Infastech (China) Ltd.**

RM 1708, 17/F., Nanyang Plaza,  
57 Hung To Rd., Kwun Tong  
Hong Kong  
Tel: +852 2950 0631  
Fax: +852 2950 0022  
infochina@infastech.com

**COREA DEL SUD****Infastech (Korea) Ltd.**

212-4, Suyang-Ri,  
Silchon-Eup, Kwangju-City,  
Kyunggi-Do, Korea, 464-874  
Tel: +82 31 798 6340  
Fax: +82 31 798 6342  
info@infastech.co.kr

**FRANCIA****Avdel France S.A.S.**

33 bis, rue des Ardennes  
BP4  
75921 Paris Cedex 19  
Tel: +33 (0) 1 4040 8000  
Fax: +33 (0) 1 4208 2450  
AvdelFrance@infastech.com

**GERMANIA****Avdel Deutschland GmbH**

Klusriede 24  
30851 Langenhagen  
Tel: +49 (0) 511 7288 0  
Fax: +49 (0) 511 7288 133  
AvdelDeutschland@infastech.com

**GIAPPONE****Infastech Kabushiki Kaisha**

Center Minami SKY,  
3-1 Chigasaki-Chuo, Tsuzuki-ku,  
Yokohama-city,  
Kanagawa Prefecture  
Japan 224-0032  
Tel: +81 45 947 1200  
Fax: +81 45 947 1205  
info@infastech.co.jp

**INDIA****Infastech Fastening Technologies****India Private Limited**

Plot No OZ-14, Hi Tech SEZ,  
SIPCOT Industrial Growth Center,  
Oragadam, Sriperumbudur Taluk,  
Kanchipuram District,  
602105 Tamilnadu  
Tel: +91 44 4711 8001  
Fax: +91 44 4711 8009  
info-in@infastech.com

**ITALIA****Avdel Italia S.r.l.**

Viale Lombardia 51/53  
20047 Brugherio (MI)  
Tel: +39 039 289911  
Fax: +39 039 2873079  
vendite@infastech.com

**MALESIA****Infastech (Malaysia) Sdn Bhd**

Lot 63, Persiaran Bunga Tanjung 1,  
Senawang Industrial Park  
70400 Seremban  
Negeri Sembilan  
Tel: +606 676 7168  
Fax: +606 676 7101  
info-my@infastech.com

**REGNO UNITO****Avdel UK Limited**

Pacific House  
2 Swiftfields  
Watchmead Industrial Estate  
Welwyn Garden City  
Hertfordshire AL7 1LY  
Tel: +44 (0) 1707 292000  
Fax: +44 (0) 1707 292199  
enquiries@infastech.com

**SINGAPORE****Infastech (Singapore) Pte Ltd.**

31 Kaki Bukit Road 3  
#05-03/06 Techlink  
Singapore, 417818  
Tel: +65 6372 5653  
Fax: +65 6744 5643  
info-sg@infastech.com

**SPAGNA****Avdel Spain S.A.**

C/ Puerto de la Morcuera, 14  
Poligono Industrial Prado Overa  
Ctra. de Toledo, km 7,8  
28919 Leganés (Madrid)  
Tel: +34 91 3416767  
Fax: +34 91 3416740  
ventas@infastech.com

**TAIWAN****Infastech/Tri-Star Limited**

No 269-7, Baodong Rd,  
Guanmiao Township,  
71841 Tainan County,  
Taiwan, R.O.C  
Tel: +886 6 596 5798 (ext 201)  
Fax: +886 6 596 5758  
info-tw@infastech.com

**USA****Avdel USA LLC**

614 NC Highway 200 South  
Stanfield, North Carolina 28163  
Tel: +1 704 888 7100  
Fax: +1 704 888 0258  
infoAvdel-USA@infastech.com

| N. foglio dati | Edizione | Nota modifica N. |
|----------------|----------|------------------|
| 07900-00795    | B        | 07/288           |
|                | B2       | 11/018           |
|                |          |                  |

[www.avdel-global.com](http://www.avdel-global.com)  
[www.infastech.com](http://www.infastech.com)

Autosert® (equipment), Avbolt®, Avdel®, Avdelmate®, Avdel TX2000®, Avdelok®, Avex®, Avibulb®, Avinox®, Avinut™, Avlug®, Avmatic®, Avplas®, Avseal®, Avsert®, Avtainer®, Avtronic®, Briv®, Bulbex®, Chobert®, Eurosert®, Fastriv®, Finsert®, Genesis®, Grovit®, Hemlok®, Hexsert®, Holding your world together®, Hydra®, Interlock®, Klamp-Tite®, KlampTite KTR®, Kvex®, Maxlok®, Monobolt®, Monobulb®, Neobolt®, Nutsert®, Nutsert SQ®, Portariv®, Rivmatic®, Rivscrew®, Speed Fastening®, Squaresert®, Stavex®, Supersert®, Thin Sheet Nutsert®, Titan®, T-Lok®, TLR®, TSN®, TX2000®, Versa-Nut®, Viking® e Viking 360® sono marchi di Avdel UK Limited. Infastech™ e Our Technology, Your Success™ sono marchi di Infastech Intellectual Properties Pte Ltd. I nomi ed i loghi delle altre società qui menzionate possono essere marchi dei loro rispettivi proprietari. Questo documento è solo a scopo informativo. Infastech non offre garanzie, espresse o implicite, in questo documento. I dati indicati sono soggetti a modifica senza preavviso come risultato della politica di continuo sviluppo e miglioramento del prodotto. Il vostro rappresentante locale Avdel è a vostra disposizione se avete bisogno di confermare le ultime informazioni.

## Genesis® G4 for 1/4" & 3/16" Avdelok®

### Fitting Instructions for Genesis® nG4/G4/G4HD 3/16 & 1/4 Avdelok® Nose Assemblies

#### IMPORTANT

THE AIR SUPPLY MUST ALWAYS BE DISCONNECTED BEFORE ANY DISMANTLING IS ATTEMPTED

The following parts are **NOT** required and must be removed from the basic tool before assembly of the Avdelok® nose equipment can commence. Part numbers can be identified by referring to the tool assembly diagram in the appropriate tool manual.

71210-02101 Jaw Spreader Housing

71230-02102 Vacuum Sleeve

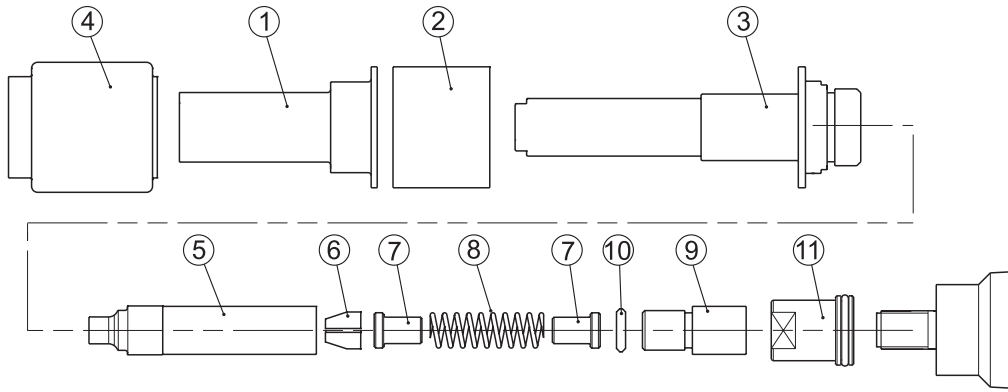
71230-02015 Locknut

71210-02104 Seal Housing

#### Assembly of Avdelok® Nose Assembly (Refer to Item Numbers ( ) listed in the table below)

1. Screw Locknut (11) fully onto the piston.
2. Screw Adaptor (9) fully onto the piston before tightening the locknut against it. Fit Friction Ring (10).
3. Assemble Chuck jaws (6), Spring Guide (7) and Spring (8) into the Chuck Collet (5). Lightly coat the Jaws and the internal bore of the Chuck Collet with Molybdenum grease.
4. Screw the Chuck Collet assembly onto the Adaptor (9) and tighten.
5. Assemble the Anvil (3) over the Chuck Collet and screw into the head Assembly.
6. Assemble the Buffer (2) and the Anvil Casing (1) over the Anvil and retain in place with the Rubber Shroud (4).

**Note:** For ease of fitting the Rubber Shroud, smear liquid soap on its internal surface.



#### 1/4 AVDELOK® NOSE ASSEMBLY 71230-05020

| ITEM | 71230-05020 for 6.4 (1/4") Avdelok® |                      |
|------|-------------------------------------|----------------------|
| 1    | 71230-05012                         | Anvil Casing         |
| 2    | 71230-05014                         | Buffer               |
| 3    | 71230-05021                         | Anvil                |
| 4    | 71230-05013                         | Rubber Shroud        |
| 5    | 07200-02201                         | Chuck Collet         |
| 6    | 07220-02302                         | Chuck Jaws           |
| 7    | 07220-02104                         | Spring Guide         |
| 8    | 07220-02103                         | Spring               |
| 9    | 07610-00501                         | Chuck Collet Adapter |
| 10   | 07610-02004                         | Friction Ring        |
| 11   | 71233-20200                         | Locknut              |

#### 3/16 AVDELOK® NOSE ASSEMBLY 71230-05010

| ITEM | 71230-05010 for 4.8 (3/16") Avdelok® |                      |
|------|--------------------------------------|----------------------|
| 1    | 71230-05012                          | Anvil Casing         |
| 2    | 71230-05014                          | Buffer               |
| 3    | 71230-05011                          | Anvil                |
| 4    | 71230-05013                          | Rubber Shroud        |
| 5    | 07200-02101                          | Chuck Collet         |
| 6    | 07220-02102                          | Chuck Jaws           |
| 7    | 07220-02104                          | Spring Guide         |
| 8    | 07220-02103                          | Spring               |
| 9    | 07610-00501                          | Chuck Collet Adapter |
| 10   | 07610-02004                          | Friction Ring        |
| 11   | 71233-20200                          | Locknut              |

**AUSTRALIA**

**Infastech (Australia) Pty Ltd.**

891 Wellington Road  
 Rowville  
 Victoria 3178  
 Tel: +61 3 9765 6400  
 Fax: +61 3 9765 6445  
 info@infastech.com.au

**CANADA**

**Avdel Canada Limited**

1030 Lorimar Drive  
 Mississauga  
 Ontario L5S 1R8  
 Tel: +1 905 364 0664  
 Fax: +1 905 364 0678  
 infoAvdel-Canada@infastech.com

**CHINA**

**Infastech (China) Ltd.**

RM 1708, 17/F., Nanyang Plaza,  
 57 Hung To Rd., Kwun Tong  
 Hong Kong  
 Tel: +852 2950 0631  
 Fax: +852 2950 0022  
 infochina@infastech.com

**FRANCE**

**Avdel France S.A.S.**

33 bis, rue des Ardennes  
 BP4  
 75921 Paris Cedex 19  
 Tel: +33 (0) 1 4040 8000  
 Fax: +33 (0) 1 4208 2450  
 AvdelFrance@infastech.com

**GERMANY**

**Avdel Deutschland GmbH**

Klusriede 24  
 30851 Langenhagen  
 Tel: +49 (0) 511 7288 0  
 Fax: +49 (0) 511 7288 133  
 AvdelDeutschland@infastech.com

**INDIA**

**Infastech Fastening Technologies**

**India Private Limited**

Plot No OZ-14, Hi Tech SEZ,  
 SIPCOT Industrial Growth Center,  
 Oragadam, Sriperumbudur Taluk,  
 Kanchipuram District,  
 602105 Tamilnadu  
 Tel: +91 44 4711 8001  
 Fax: +91 44 4711 8009  
 info-in@infastech.com

**ITALY**

**Avdel Italia S.r.l.**

Viale Lombardia 51/53  
 20047 Brugherio (MI)  
 Tel: +39 039 289911  
 Fax: +39 039 2873079  
 vendite@infastech.com

**JAPAN**

**Infastech Kabushiki Kaisha**

Center Minami SKY,  
 3-1 Chigasaki-Chuo, Tsuzuki-ku,  
 Yokohama-city,  
 Kanagawa Prefecture  
 Japan 224-0032  
 Tel: +81 45 947 1200  
 Fax: +81 45 947 1205  
 info@infastech.co.jp

**MALAYSIA**

**Infastech (Malaysia) Sdn Bhd**

Lot 63, Persiaran Bunga Tanjung 1,  
 Senawang Industrial Park  
 70400 Seremban  
 Negeri Sembilan  
 Tel: +606 676 7168  
 Fax: +606 676 7101  
 info-my@infastech.com

**SINGAPORE**

**Infastech (Singapore) Pte Ltd.**

31 Kaki Bukit Road 3  
 #05-03/06 Techlink  
 Singapore, 417818  
 Tel: +65 6372 5653  
 Fax: +65 6744 5643  
 info-sg@infastech.com

**SOUTH KOREA**

**Infastech (Korea) Ltd.**

212-4, Suyang-Ri,  
 Silchon-Eup, Kwangju-City,  
 Kyunggi-Do, Korea, 464-874  
 Tel: +82 31 798 6340  
 Fax: +82 31 798 6342  
 info@infastech.co.kr

**SPAIN**

**Avdel Spain S.A.**

C/ Puerto de la Morcuera, 14  
 Poligono Industrial Prado Overa  
 Ctra. de Toledo, km 7,8  
 28919 Leganés (Madrid)  
 Tel: +34 91 3416767  
 Fax: +34 91 3416740  
 ventas@infastech.com

**TAIWAN**

**Infastech/Tri-Star Limited**

No 269-7, Baodong Rd,  
 Guanmiao Township,  
 71841 Tainan County,  
 Taiwan, R.O.C  
 Tel: +886 6 596 5798 (ext 201)  
 Fax: +886 6 596 5758  
 info-tw@infastech.com

**UNITED KINGDOM**

**Avdel UK Limited**

Pacific House  
 2 Swiftfields  
 Watchmead Industrial Estate  
 Welwyn Garden City  
 Hertfordshire AL7 1LY  
 Tel: +44 (0) 1707 292000  
 Fax: +44 (0) 1707 292199  
 enquiries@infastech.com

**USA**

**Avdel USA LLC**

614 NC Highway 200 South  
 Stanfield, North Carolina 28163  
 Tel: +1 704 888 7100  
 Fax: +1 704 888 0258  
 infoAvdel-USA@infastech.com

| Data Sheet No. | Issue | Change Note No. |
|----------------|-------|-----------------|
| 07900-00795    | B     | 07/288          |
|                | B2    | 11/018          |
|                |       |                 |

[www.avdel-global.com](http://www.avdel-global.com)  
[www.infastech.com](http://www.infastech.com)

Autosert® (equipment), Avbolt®, Avdel®, Avdelmate®, Avdel TX2000®, Avdelok®, Avex®, Avibulb®, Avinox®, Avinut™, Avlug®, Avmatic®, Avplas®, Avseal®, Avsert®, Avtainer®, Avtronic®, Briv®, Bulbex®, Chobert®, Eurosert®, Fastriv®, Finsert®, Genesis®, Grovit®, Hemlok®, Hexsert®, Holding your world together®, Hydra®, Interlock®, Klamp-Tite®, KlampTite KTR®, Kvex®, Maxlok®, Monobolt®, Monobulb®, Neobolt®, Nutsert®, Nutsert SQ®, Portariv®, Rivmatic®, Rivscrew®, Speed Fastening®, Squaresert®, Stavex®, Supersert®, Thin Sheet Nutsert®, Titan®, T-Lok®, TLR®, TSN®, TX2000®, Versa-Nut®, Viking® and Viking 360® are trademarks of Avdel UK Limited. Infastech™ and Our Technology, Your Success™ are trademarks of Infastech Intellectual Properties Pte Ltd. The names and logos of other companies mentioned herein may be trademarks of their respective owners. This document is for informational purposes only. Infastech makes no warranties, expressed or implied, in this document. Data shown is subject to change without prior notice as a result of continuous product development and improvement policy. Your local Avdel representative is at your disposal should you need to confirm latest information.