

Genesis® G4 pour 1/4" & 3/16" Avdelok®

Instructions de montage pour les ensembles de nez Genesis® nG4/G4/G4HD 3/16 & 1/4 Avdelok®

IMPORTANT

VEILLER A DECONNECTER L'ALIMENTATION EN AIR AVANT LA DEPOSE DE L'EQUIPEMENT

Les pièces suivantes **NE SONT PAS** requises et doivent être déposées de l'outil de base avant de commencer le montage de l'équipement de nez Avdelok®. Les numéros de pièce peuvent être identifiés en se référant au schéma d'assemblage de l'outil dans le manuel de l'outil approprié.

71210-02101 Carter guide

71230-02102 Manchon de vide

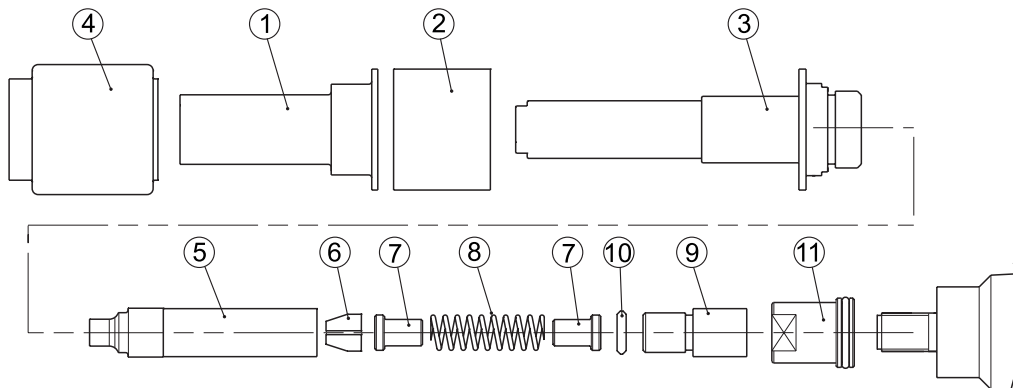
71230-02015 Ecrou de blocage

71210-02104 Logement de joint

Montage de l'ensemble de nez Avdelok® (Se reporter aux numéros de repère () indiqués dans le tableau ci-dessous)

1. Visser l'écrou de blocage (11) entièrement sur le piston.
2. Visser l'adaptateur (9) entièrement sur le piston avant de serrer l'écrou de blocage contre ce dernier. Poser la rondelle de frottement (10).
3. Assembler les mâchoires de mors (6), le guide de ressort (7) et le ressort (8) dans le boîtier de mors (5). Enduire légèrement les mâchoires et l'alésage interne du boîtier de mors avec de la graisse au bisulfure de molybdène.
4. Visser l'ensemble de boîtier de mors sur l'adaptateur (9) et serrer.
5. Poser l'enclume (3) sur le boîtier de mors et visser l'ensemble de tête.
6. Assembler le butoir (2) et le carter d'enclume (1) sur l'enclume et maintenir en place à l'aide de l'enveloppe de protection en caoutchouc (4).

Remarque : Enduire de savon la surface interne de l'enveloppe de protection en caoutchouc pour faciliter la pose.



1/4 AVDELOK® ENSEMBLE DE NEZ 71230-05020

REPÈRE	71230-05020 pour l'équipement 6,4 (1/4") Avdelok®	
1	71230-05012	Carter d'enclume
2	71230-05014	Butoir
3	71230-05021	Enclume
4	71230-05013	Enveloppe de protection en caoutchouc
5	07200-02201	Boîtier de mors
6	07220-02302	Mâchoires de mors
7	07220-02104	Guide de ressort
8	07220-02103	Ressort
9	07610-00501	Adaptateur de boîtier de mors
10	07610-02004	Rondelle de frottement
11	71233-20200	Ecrou de blocage

3/16 AVDELOK® ENSEMBLE DE NEZ 71230-05010

REPÈRE	71230-05010 pour l'équipement 4,8 (3/16") Avdelok®	
1	71230-05012	Carter d'enclume
2	71230-05014	Butoir
3	71230-05011	Enclume
4	71230-05013	Enveloppe de protection en caoutchouc
5	07200-02101	Boîtier de mors
6	07220-02102	Mâchoires de mors
7	07220-02104	Guide de ressort
8	07220-02103	Ressort
9	07610-00501	Adaptateur de boîtier de mors
10	07610-02004	Rondelle de frottement
11	71233-20200	Ecrou de blocage

ALLEMAGNE

Avdel Deutschland GmbH
 Klusriede 24
 30851 Langenhagen
 Tel: +49 (0) 511 7288 0
 Fax: +49 (0) 511 7288 133
 AvdelDeutschland@infastech.com

AUSTRALIE

Infastech (Australia) Pty Ltd.
 891 Wellington Road
 Rowville
 Victoria 3178
 Tel: +61 3 9765 6400
 Fax: +61 3 9765 6445
 info@infastech.com.au

CANADA

Avdel Canada Limited
 1030 Lorimar Drive
 Mississauga
 Ontario L5S 1R8
 Tel: +1 905 364 0664
 Fax: +1 905 364 0678
 infoAvdel-Canada@infastech.com

CHINE

Infastech (China) Ltd.
 RM 1708, 17/F., Nanyang Plaza,
 57 Hung To Rd., Kwun Tong
 Hong Kong
 Tel: +852 2950 0631
 Fax: +852 2950 0022
 infochina@infastech.com

CORRÉ DU SUD

Infastech (Korea) Ltd.
 212-4, Suyang-Ri,
 Silchon-Eup, Kwangju-City,
 Kyunggi-Do, Korea, 464-874
 Tel: +82 31 798 6340
 Fax: +82 31 798 6342
 info@infastech.co.kr

ESPAÑE

Avdel Spain S.A.
 C/ Puerto de la Morcuera, 14
 Poligono Industrial Prado Overa
 Ctra. de Toledo, km 7,8
 28919 Leganés (Madrid)
 Tel: +34 91 3416767
 Fax: +34 91 3416740
 ventas@infastech.com

FRANCE

Avdel France S.A.S.
 33 bis, rue des Ardennes
 BP4
 75921 Paris Cedex 19
 Tel: +33 (0) 1 4040 8000
 Fax: +33 (0) 1 4208 2450
 AvdelFrance@infastech.com

INDE

Infastech Fastening Technologies India Private Limited
 Plot No OZ-14, Hi Tech SEZ,
 SIPCOT Industrial Growth Center,
 Oragadam, Sriperumbudur Taluk,
 Kanchipuram District,
 602105 Tamilnadu
 Tel: +91 44 4711 8001
 Fax: +91 44 4711 8009
 info-in@infastech.com

ITALIE

Avdel Italia S.r.l.
 Viale Lombardia 51/53
 20047 Brugherio (MI)
 Tel: +39 039 289911
 Fax: +39 039 2873079
 vendite@infastech.com

JAPON

Infastech Kabushiki Kaisha
 Center Minami SKY,
 3-1 Chigasaki-Chuo, Tsuzuki-ku,
 Yokohama-city,
 Kanagawa Prefecture
 Japan 224-0032
 Tel: +81 45 947 1200
 Fax: +81 45 947 1205
 info@infastech.co.jp

MALAISIE

Infastech (Malaysia) Sdn Bhd
 Lot 63, Persiaran Bunga Tanjung 1,
 Senawang Industrial Park
 70400 Seremban
 Negeri Sembilan
 Tel: +606 676 7168
 Fax: +606 676 7101
 info-my@infastech.com

ROYAUME-UNI

Avdel UK Limited
 Pacific House
 2 Swiftfields
 Watchmead Industrial Estate
 Welwyn Garden City
 Hertfordshire AL7 1LY
 Tel: +44 (0) 1707 292000
 Fax: +44 (0) 1707 292199
 enquiries@infastech.com

SINGAPOUR

Infastech (Singapore) Pte Ltd.
 31 Kaki Bukit Road 3
 #05-03/06 Techlink
 Singapore, 417818
 Tel: +65 6372 5653
 Fax: +65 6744 5643
 info-sg@infastech.com

TAÏWAN

Infastech/Tri-Star Limited
 No 269-7, Baodong Rd,
 Guanmiao Township,
 71841 Tainan County,
 Taiwan, R.O.C
 Tel: +886 6 596 5798 (ext 201)
 Fax: +886 6 596 5758
 info-tw@infastech.com

USA

Avdel USA LLC
 614 NC Highway 200 South
 Stanfield, North Carolina 28163
 Tel: +1 704 888 7100
 Fax: +1 704 888 0258
 infoAvdel-USA@infastech.com

Feuille de données techniques n°	Edition	N° de modification
07900-00795	B	07/288
	B2	11/018

www.avdel-global.com
www.infastech.com

Autosert® (equipment), Avbolt®, Avdel®, Avdelmate®, Avdel TX2000®, Avdelok®, Avex®, Avibulb®, Avinox®, Avinut™, Avlug®, Avmatic®, Avplas®, Avseal®, Avsert®, Avtainer®, Avtronic®, Briv®, Bulbex®, Chobert®, Eurosert®, Fastriv®, Finsert®, Genesis®, Grovit®, Hemlok®, Hexsert®, Holding your world together®, Hydra®, Interlock®, Klamp-Tite®, KlampTite KTR®, Kvex®, Maxlok®, Monobolt®, Monobulb®, Neobolt®, Nutsert®, Nutsert SQ®, Portariv®, Rivmatic®, Rivscrew®, Speed Fastening®, Squaresert®, Stavex®, Supersert®, Thin Sheet Nutsert®, Titan®, T-Lok®, TLR®, TSN®, TX2000®, Versa-Nut®, Viking® et Viking 360® sont des marques déposées de Avdel UK Limited. Infastech™ et Our Technology, Your Success™ sont des marques déposées de Infastech Intellectual Properties Pte Ltd. Les noms et logos d'autres sociétés mentionnées peuvent être des marques de leur propres sociétés. Ce document est purement informatif. Infastech ne donne aucune garantie, expresse ou implicite dans ce document. La société se réserve la possibilité de modifier à tout moment les données figurant sur le présent document dans le cadre de sa procédure de développement et d'amélioration continue des produits. Votre représentant Avdel est à votre disposition, si vous avez besoin de valider les dernières données techniques mises en oeuvre.

Genesis® G4 for 1/4" & 3/16" Avdelok®

Fitting Instructions for Genesis® nG4/G4/G4HD 3/16 & 1/4 Avdelok® Nose Assemblies

IMPORTANT

THE AIR SUPPLY MUST ALWAYS BE DISCONNECTED BEFORE ANY DISMANTLING IS ATTEMPTED

The following parts are **NOT** required and must be removed from the basic tool before assembly of the Avdelok® nose equipment can commence. Part numbers can be identified by referring to the tool assembly diagram in the appropriate tool manual.

71210-02101 Jaw Spreader Housing

71230-02102 Vacuum Sleeve

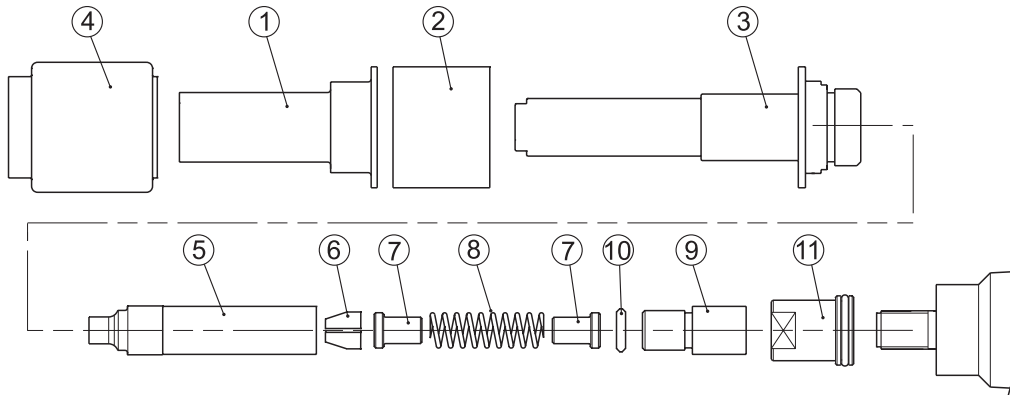
71230-02015 Locknut

71210-02104 Seal Housing

Assembly of Avdelok® Nose Assembly (Refer to Item Numbers () listed in the table below)

1. Screw Locknut (11) fully onto the piston.
2. Screw Adaptor (9) fully onto the piston before tightening the locknut against it. Fit Friction Ring (10).
3. Assemble Chuck jaws (6), Spring Guide (7) and Spring (8) into the Chuck Collet (5). Lightly coat the Jaws and the internal bore of the Chuck Collet with Molybdenum grease.
4. Screw the Chuck Collet assembly onto the Adaptor (9) and tighten.
5. Assemble the Anvil (3) over the Chuck Collet and screw into the head Assembly.
6. Assemble the Buffer (2) and the Anvil Casing (1) over the Anvil and retain in place with the Rubber Shroud (4).

Note: For ease of fitting the Rubber Shroud, smear liquid soap on its internal surface.



1/4 AVDELOK® NOSE ASSEMBLY 71230-05020

ITEM	71230-05020 for 6.4 (1/4") Avdelok®	
1	71230-05012	Anvil Casing
2	71230-05014	Buffer
3	71230-05021	Anvil
4	71230-05013	Rubber Shroud
5	07200-02201	Chuck Collet
6	07220-02302	Chuck Jaws
7	07220-02104	Spring Guide
8	07220-02103	Spring
9	07610-00501	Chuck Collet Adapter
10	07610-02004	Friction Ring
11	71233-20200	Locknut

3/16 AVDELOK® NOSE ASSEMBLY 71230-05010

ITEM	71230-05010 for 4.8 (3/16") Avdelok®	
1	71230-05012	Anvil Casing
2	71230-05014	Buffer
3	71230-05011	Anvil
4	71230-05013	Rubber Shroud
5	07200-02101	Chuck Collet
6	07220-02102	Chuck Jaws
7	07220-02104	Spring Guide
8	07220-02103	Spring
9	07610-00501	Chuck Collet Adapter
10	07610-02004	Friction Ring
11	71233-20200	Locknut



Since 1922



Avdel® iForm™

Since 1 936

2010



Our Technology, Your Success

AUSTRALIA

Infastech (Australia) Pty Ltd.

891 Wellington Road
Rowville
Victoria 3178
Tel: +61 3 9765 6400
Fax: +61 3 9765 6445
info@infastech.com.au

CANADA

Avdel Canada Limited

1030 Lorimar Drive
Mississauga
Ontario L5S 1R8
Tel: +1 905 364 0664
Fax: +1 905 364 0678
infoAvdel-Canada@infastech.com

CHINA

Infastech (China) Ltd.

RM 1708, 17/F., Nanyang Plaza,
57 Hung To Rd., Kwun Tong
Hong Kong
Tel: +852 2950 0631
Fax: +852 2950 0022
infochina@infastech.com

FRANCE

Avdel France S.A.S.

33 bis, rue des Ardennes
BP4
75921 Paris Cedex 19
Tel: +33 (0) 1 4040 8000
Fax: +33 (0) 1 4208 2450
AvdelFrance@infastech.com

GERMANY

Avdel Deutschland GmbH

Klusriede 24
30851 Langenhagen
Tel: +49 (0) 511 7288 0
Fax: +49 (0) 511 7288 133
AvdelDeutschland@infastech.com

INDIA

Infastech Fastening Technologies

India Private Limited

Plot No OZ-14, Hi Tech SEZ,
SIPCOT Industrial Growth Center,
Oragadam, Sriperumbudur Taluk,
Kanchipuram District,
602105 Tamilnadu
Tel: +91 44 4711 8001
Fax: +91 44 4711 8009
info-in@infastech.com

ITALY

Avdel Italia S.r.l.

Viale Lombardia 51/53
20047 Brugherio (MI)
Tel: +39 039 289911
Fax: +39 039 2873079
vendite@infastech.com

JAPAN

Infastech Kabushiki Kaisha

Center Minami SKY,
3-1 Chigasaki-Chuo, Tsuzuki-ku,
Yokohama-city,
Kanagawa Prefecture
Japan 224-0032
Tel: +81 45 947 1200
Fax: +81 45 947 1205
info@infastech.co.jp

MALAYSIA

Infastech (Malaysia) Sdn Bhd

Lot 63, Persiaran Bunga Tanjung 1,
Senawang Industrial Park
70400 Seremban
Negeri Sembilan
Tel: +606 676 7168
Fax: +606 676 7101
info-my@infastech.com

SINGAPORE

Infastech (Singapore) Pte Ltd.

31 Kaki Bukit Road 3
#05-03/06 Techlink
Singapore, 417818
Tel: +65 6372 5653
Fax: +65 6744 5643
info-sg@infastech.com

SOUTH KOREA

Infastech (Korea) Ltd.

212-4, Suyang-Ri,
Silchon-Eup, Kwangju-City,
Kyunggi-Do, Korea, 464-874
Tel: +82 31 798 6340
Fax: +82 31 798 6342
info@infastech.co.kr

SPAIN

Avdel Spain S.A.

C/ Puerto de la Morcuera, 14
Poligono Industrial Prado Overa
Ctra. de Toledo, km 7,8
28919 Leganés (Madrid)
Tel: +34 91 3416767
Fax: +34 91 3416740
ventas@infastech.com

TAIWAN

Infastech/Tri-Star Limited

No 269-7, Baodong Rd,
Guanmiao Township,
71841 Tainan County,
Taiwan, R.O.C
Tel: +886 6 596 5798 (ext 201)
Fax: +886 6 596 5758
info-tw@infastech.com

UNITED KINGDOM

Avdel UK Limited

Pacific House
2 Swiftfields
Watchmead Industrial Estate
Welwyn Garden City
Hertfordshire AL7 1LY
Tel: +44 (0) 1707 292000
Fax: +44 (0) 1707 292199
enquiries@infastech.com

USA

Avdel USA LLC

614 NC Highway 200 South
Stanfield, North Carolina 28163
Tel: +1 704 888 7100
Fax: +1 704 888 0258
infoAvdel-USA@infastech.com

Data Sheet No.	Issue	Change Note No.
07900-00795	B	07/288
	B2	11/018

www.avdel-global.com
www.infastech.com

Autosert® (equipment), Avbolt®, Avdel®, Avdelmate®, Avdel TX2000®, Avdelok®, Avex®, Avibulb®, Avinox®, Avinut™, Avlug®, Avmatic®, Avplas®, Avseal®, Avsert®, Avtainer®, Avtronic®, Briv®, Bulbex®, Chobert®, Eurosert®, Fastriv®, Finsert®, Genesis®, Grovit®, Hemlok®, Hexsert®, Holding your world together®, Hydra®, Interlock®, Klamp-Tite®, KlampTite KTR®, Kvex®, Maxlok®, Monobolt®, Monobulb®, Neobolt®, Nutsert®, Nutsert SQ®, Portariv®, Rivmatic®, Rivscrew®, Speed Fastening®, Squaresert®, Stavex®, Supersert®, Thin Sheet Nutsert®, Titan®, T-Lok®, TLR®, TSN®, TX2000®, Versa-Nut®, Viking® and Viking 360® are trademarks of Avdel UK Limited. Infastech™ and Our Technology, Your Success™ are trademarks of Infastech Intellectual Properties Pte Ltd. The names and logos of other companies mentioned herein may be trademarks of their respective owners. This document is for informational purposes only. Infastech makes no warranties, expressed or implied, in this document. Data shown is subject to change without prior notice as a result of continuous product development and improvement policy. Your local Avdel representative is at your disposal should you need to confirm latest information.