

Genesis® G4, 1/4 ja 3/16 Avdelok®

Genesis® nG4/G4/G4HD 3/16 & 1/4 Avdelok®-suutinsarjojen asennusohjeet

TÄRKEÄÄ

PAINEILMAN SYÖTTÖ ON AINA KATKAISTAVA ENNEN PURKAMISTA

Seuraavia osia **EI** tarvita ja ne on poistettava työkalusta ennen Avdelok®-suutinsarjan asennusta.

Osanumerot löytyvät kunkin työkalun käyttöohjeessa olevasta kokoonpanokaaviosta.

71210-02101 Leuan levittäjän pesä

71230-02102 Imuholkki

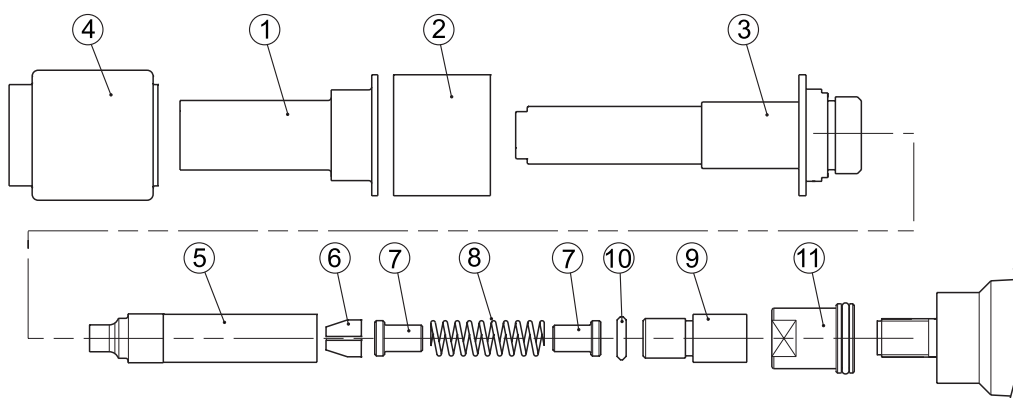
71230-02015 Lukitusmutteri

71210-02104 Tiivistepesä

Avdelok®-suutinsarjan asennus (Suluissa olevat osanumerot on lueteltu alla olevassa taulukossa)

1. Kierrä lukitusmutteri (**11**) kokonaan mäntään.
2. Kierrä sovitin (**9**) kokonaan mäntään ennen kuin kiristät lukitusmutterin sitä vasten. Asenna kitkarengas (**10**).
3. Asenna leuat (**6**), jousen ohjain (**7**) ja jousi (**8**) leukaholkkiin (**5**). Päälystä leuat ja leukaholkin sisäpuoli kevyesti molybdeeniliumrasvalla.
4. Kierrä koottu leukaholkki sovittimeen (**9**) ja kiristä.
5. Asenna alasin (**3**) leukaholkin päälle ja kierrä pääkokoonpanoon.
6. Asenna välilevy (**2**) ja alasimen pesä (**1**) alasimen päälle ja kiinnitä ne paikalleen kumisuojuksella (**4**).

Huom. Kumisuojuksen asennusta voi helpottaa sivelemällä sen sisäpinnalle nestesaippuaa.



1/4 AVDELOK®-SUUTINSARJA 71230-05020

TUOTE	71230-05020, 6,4 (1/4) Avdelok®	
1	71230-05012	Alasimen pesä
2	71230-05014	Välilevy
3	71230-05021	Alasin
4	71230-05013	Kumisuojus
5	07200-02201	Leukaholkki
6	07220-02302	Leuat
7	07220-02104	Jousen ohjain
8	07220-02103	Jousi
9	07610-00501	Leukaholkin sovitin
10	07610-02004	Kitkarengas
11	71233-20200	Lukitusmutteri

3/16 AVDELOK®-SUUTINSARJA 71230-05010

TUOTE	71230-05010, 4,8 (3/16) Avdelok®	
1	71230-05012	Alasimen pesä
2	71230-05014	Välilevy
3	71230-05011	Alasin
4	71230-05013	Kumisuojus
5	07200-02101	Leukaholkki
6	07220-02102	Leuat
7	07220-02104	Jousen ohjain
8	07220-02103	Jousi
9	07610-00501	Leukaholkin sovitin
10	07610-02004	Kitkarengas
11	71233-20200	Lukitusmutteri

AUSTRALIA

Infastech (Australia) Pty Ltd.

891 Wellington Road
Rowville
Victoria 3178
Tel: +61 3 9765 6400
Fax: +61 3 9765 6445
info@infastech.com.au

KANADA

Avdel Canada Limited

1030 Lorimar Drive
Mississauga
Ontario L5S 1R8
Tel: +1 905 364 0664
Fax: +1 905 364 0678
infoAvdel-Canada@infastech.com

KIINA

Infastech (China) Ltd.

RM 1708, 17/F., Nanyang Plaza,
57 Hung To Rd., Kwun Tong
Hong Kong
Tel: +852 2950 0631
Fax: +852 2950 0022
infochina@infastech.com

RANSKA

Avdel France S.A.S.

33 bis, rue des Ardennes
BP4
75921 Paris Cedex 19
Tel: +33 (0) 1 4040 8000
Fax: +33 (0) 1 4208 2450
AvdelFrance@infastech.com

SAKSA

Avdel Deutschland GmbH

Klusriede 24
30851 Langenhagen
Tel: +49 (0) 511 7288 0
Fax: +49 (0) 511 7288 133
AvdelDeutschland@infastech.com

INTIA

Infastech Fastening Technologies

India Private Limited

Plot No OZ-14, Hi Tech SEZ,
SIPCOT Industrial Growth Center,
Oragadam, Sriperumbudur Taluk,
Kanchipuram District,
602105 Tamilnadu
Tel: +91 44 4711 8001
Fax: +91 44 4711 8009
info-in@infastech.com

ITALIA

Avdel Italia S.r.l.

Viale Lombardia 51/53
20047 Brugherio (MI)
Tel: +39 039 289911
Fax: +39 039 2873079
vendite@infastech.com

JAPANI

Infastech Kabushiki Kaisha

Center Minami SKY,
3-1 Chigasaki-Chuo, Tsuzuki-ku,
Yokohama-city,
Kanagawa Prefecture
Japan 224-0032
Tel: +81 45 947 1200
Fax: +81 45 947 1205
info@infastech.co.jp

MALESIA

Infastech (Malaysia) Sdn Bhd

Lot 63, Persiaran Bunga Tanjung 1,
Senawang Industrial Park
70400 Seremban
Negeri Sembilan
Tel: +606 676 7168
Fax: +606 676 7101
info-my@infastech.com

SINGAPORE

Infastech (Singapore) Pte Ltd.

31 Kaki Bukit Road 3
#05-03/06 Techlink
Singapore, 417818
Tel: +65 6372 5653
Fax: +65 6744 5643
info-sg@infastech.com

ETELÄ-KOREA

Infastech (Korea) Ltd.

212-4, Suyang-Ri,
Silchon-Eup, Kwangju-City,
Kyunggi-Do, Korea, 464-874
Tel: +82 31 798 6340
Fax: +82 31 798 6342
info@infastech.co.kr

ESPANJA

Avdel Spain S.A.

C/ Puerto de la Morcuera, 14
Poligono Industrial Prado Overa
Ctra. de Toledo, km 7,8
28919 Leganés (Madrid)
Tel: +34 91 3416767
Fax: +34 91 3416740
ventas@infastech.com

TAIWAN

Infastech/Tri-Star Limited

No 269-7, Baodong Rd,
Guanmiao Township,
71841 Tainan County,
Taiwan, R.O.C
Tel: +886 6 596 5798 (ext 201)
Fax: +886 6 596 5758
info-tw@infastech.com

YHDISTYNYT KUNINGASKUNTA

Avdel UK Limited

Pacific House
2 Swiftfields
Watchmead Industrial Estate
Welwyn Garden City
Hertfordshire AL7 1LY
Tel: +44 (0) 1707 292000
Fax: +44 (0) 1707 292199
enquiries@infastech.com

YHDYSVALLAT

Avdel USA LLC

614 NC Highway 200 South
Stanfield, North Carolina 28163
Tel: +1 704 888 7100
Fax: +1 704 888 0258
infoAvdel-USA@infastech.com

Esite nro.	Versio	Muutoshuomautus nro
07900-00795	B	07/288
	B2	11/018

www.avdel-global.com
www.infastech.com

Autosert® (equipment), Avbolt®, Avdel®, Avdelmate®, Avdel TX2000®, Avdelok®, Avex®, Avibulb®, Avinox®, Avinut™, Avlug®, Avmatic®, Avplas®, Avseal®, Avsert®, Avtainer®, Avtronic®, Briv®, Bulbex®, Chobert®, Eurosert®, Fastriv®, Finsert®, Genesis®, Grovit®, Hemlok®, Hexsert®, Holding your world together®, Hydra®, Interlock®, Klamp-Tite®, KlampTite KTR®, Kvex®, Maxlok®, Monobolt®, Monobulb®, Neobolt®, Nutsert®, Nutsert SQ®, Portariv®, Rivmatic®, Rivscrew®, Speed Fastening®, Squaresert®, Stavex®, Supersert®, Thin Sheet Nutsert®, Titan®, T-Lok®, TLR®, TSN®, TX2000®, Versa-Nut®, Viking® ja Viking 360® ovat Avdel UK Limitedin tuotemerkkejä. Infastech™ ja Our Technology, Your Success™ ovat Infastech Intellectual Properties Pte Ltd:n tuotemerkkejä. Tässä mainitut muiden yritysten nimet ja logot saattavat olla kunkin omistajansa tuotemerkkejä. Tämä asiakirja on tarkoitettu vain tiedotustarkoituksiin. Infastech ei myönnä tälle asiakirjalle minkäänlaista takuuta, ilmaistut ja oletetut takuut mukaan lukien. Esitettyjä tietoja voidaan muuttaa ilman ennakkoilmoitusta, koska tuotetta kehitetään ja parannetaan jatkuvasti. Ota yhteys paikalliseen Avdel-jälleenmyyjään, jos haluat varmistaa uusimmat tiedot.

Genesis® G4 for 1/4" & 3/16" Avdelok®

Fitting Instructions for Genesis® nG4/G4/G4HD 3/16 & 1/4 Avdelok® Nose Assemblies

I M P O R T A N T

THE AIR SUPPLY MUST ALWAYS BE DISCONNECTED BEFORE ANY DISMANTLING IS ATTEMPTED

The following parts are **NOT** required and must be removed from the basic tool before assembly of the Avdelok® nose equipment can commence. Part numbers can be identified by referring to the tool assembly diagram in the appropriate tool manual.

71210-02101 Jaw Spreader Housing

71230-02102 Vacuum Sleeve

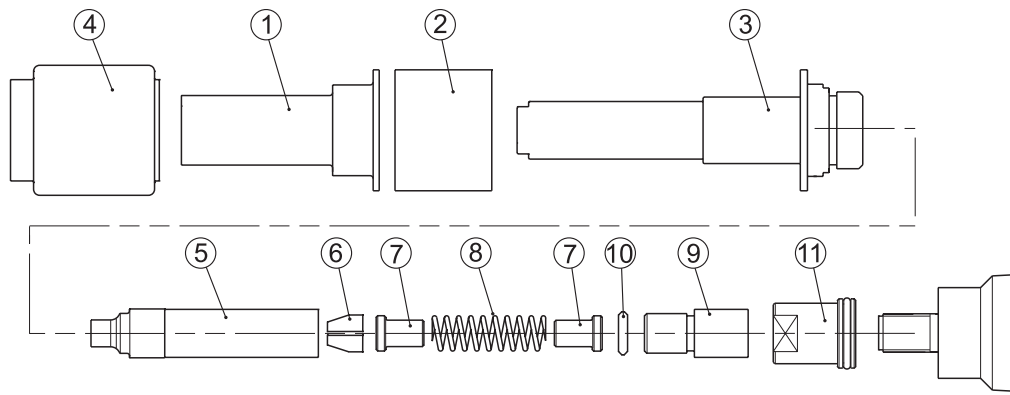
71230-02015 Locknut

71210-02104 Seal Housing

Assembly of Avdelok® Nose Assembly (Refer to Item Numbers () listed in the table below)

1. Screw Locknut (11) fully onto the piston.
2. Screw Adaptor (9) fully onto the piston before tightening the locknut against it. Fit Friction Ring (10).
3. Assemble Chuck jaws (6), Spring Guide (7) and Spring (8) into the Chuck Collet (5). Lightly coat the Jaws and the internal bore of the Chuck Collet with Molybdenum grease.
4. Screw the Chuck Collet assembly onto the Adaptor (9) and tighten.
5. Assemble the Anvil (3) over the Chuck Collet and screw into the head Assembly.
6. Assemble the Buffer (2) and the Anvil Casing (1) over the Anvil and retain in place with the Rubber Shroud (4).

Note: For ease of fitting the Rubber Shroud, smear liquid soap on its internal surface.



1/4 AVDELOK® NOSE ASSEMBLY 71230-05020

ITEM	71230-05020 for 6.4 (1/4") Avdelok®	
1	71230-05012	Anvil Casing
2	71230-05014	Buffer
3	71230-05021	Anvil
4	71230-05013	Rubber Shroud
5	07200-02201	Chuck Collet
6	07220-02302	Chuck Jaws
7	07220-02104	Spring Guide
8	07220-02103	Spring
9	07610-00501	Chuck Collet Adapter
10	07610-02004	Friction Ring
11	71233-20200	Locknut

3/16 AVDELOK® NOSE ASSEMBLY 71230-05010

ITEM	71230-05010 for 4.8 (3/16") Avdelok®	
1	71230-05012	Anvil Casing
2	71230-05014	Buffer
3	71230-05011	Anvil
4	71230-05013	Rubber Shroud
5	07200-02101	Chuck Collet
6	07220-02102	Chuck Jaws
7	07220-02104	Spring Guide
8	07220-02103	Spring
9	07610-00501	Chuck Collet Adapter
10	07610-02004	Friction Ring
11	71233-20200	Locknut



Since 1922



Avdel® iForm™

Since 1 936

2010



Our Technology, Your Success

AUSTRALIA

Infastech (Australia) Pty Ltd.

891 Wellington Road
Rowville
Victoria 3178
Tel: +61 3 9765 6400
Fax: +61 3 9765 6445
info@infastech.com.au

CANADA

Avdel Canada Limited

1030 Lorimar Drive
Mississauga
Ontario L5S 1R8
Tel: +1 905 364 0664
Fax: +1 905 364 0678
infoAvdel-Canada@infastech.com

CHINA

Infastech (China) Ltd.

RM 1708, 17/F., Nanyang Plaza,
57 Hung To Rd., Kwun Tong
Hong Kong
Tel: +852 2950 0631
Fax: +852 2950 0022
infochina@infastech.com

FRANCE

Avdel France S.A.S.

33 bis, rue des Ardennes
BP4
75921 Paris Cedex 19
Tel: +33 (0) 1 4040 8000
Fax: +33 (0) 1 4208 2450
AvdelFrance@infastech.com

GERMANY

Avdel Deutschland GmbH

Klusriede 24
30851 Langenhagen
Tel: +49 (0) 511 7288 0
Fax: +49 (0) 511 7288 133
AvdelDeutschland@infastech.com

INDIA

Infastech Fastening Technologies

India Private Limited

Plot No OZ-14, Hi Tech SEZ,
SIPCOT Industrial Growth Center,
Oragadam, Sriperumbudur Taluk,
Kanchipuram District,
602105 Tamilnadu
Tel: +91 44 4711 8001
Fax: +91 44 4711 8009
info-in@infastech.com

ITALY

Avdel Italia S.r.l.

Viale Lombardia 51/53
20047 Brugherio (MI)
Tel: +39 039 289911
Fax: +39 039 2873079
vendite@infastech.com

JAPAN

Infastech Kabushiki Kaisha

Center Minami SKY,
3-1 Chigasaki-Chuo, Tsuzuki-ku,
Yokohama-city,
Kanagawa Prefecture
Japan 224-0032
Tel: +81 45 947 1200
Fax: +81 45 947 1205
info@infastech.co.jp

MALAYSIA

Infastech (Malaysia) Sdn Bhd

Lot 63, Persiaran Bunga Tanjung 1,
Senawang Industrial Park
70400 Seremban
Negeri Sembilan
Tel: +606 676 7168
Fax: +606 676 7101
info-my@infastech.com

SINGAPORE

Infastech (Singapore) Pte Ltd.

31 Kaki Bukit Road 3
#05-03/06 Techlink
Singapore, 417818
Tel: +65 6372 5653
Fax: +65 6744 5643
info-sg@infastech.com

SOUTH KOREA

Infastech (Korea) Ltd.

212-4, Suyang-Ri,
Silchon-Eup, Kwangju-City,
Kyunggi-Do, Korea, 464-874
Tel: +82 31 798 6340
Fax: +82 31 798 6342
info@infastech.co.kr

SPAIN

Avdel Spain S.A.

C/ Puerto de la Morcuera, 14
Poligono Industrial Prado Overa
Ctra. de Toledo, km 7,8
28919 Leganés (Madrid)
Tel: +34 91 3416767
Fax: +34 91 3416740
ventas@infastech.com

TAIWAN

Infastech/Tri-Star Limited

No 269-7, Baodong Rd,
Guanmiao Township,
71841 Tainan County,
Taiwan, R.O.C
Tel: +886 6 596 5798 (ext 201)
Fax: +886 6 596 5758
info-tw@infastech.com

UNITED KINGDOM

Avdel UK Limited

Pacific House
2 Swiftfields
Watchmead Industrial Estate
Welwyn Garden City
Hertfordshire AL7 1LY
Tel: +44 (0) 1707 292000
Fax: +44 (0) 1707 292199
enquiries@infastech.com

USA

Avdel USA LLC

614 NC Highway 200 South
Stanfield, North Carolina 28163
Tel: +1 704 888 7100
Fax: +1 704 888 0258
infoAvdel-USA@infastech.com

Data Sheet No.	Issue	Change Note No.
07900-00795	B	07/288
	B2	11/018

www.avdel-global.com
www.infastech.com

Autosert® (equipment), Avbolt®, Avdel®, Avdelmate®, Avdel TX2000®, Avdelok®, Avex®, Avibulb®, Avinox®, Avinut™, Avlug®, Avmatic®, Avplas®, Avseal®, Avsert®, Avtainer®, Avtronic®, Briv®, Bulbex®, Chobert®, Eurosert®, Fastriv®, Finsert®, Genesis®, Grovit®, Hemlok®, Hexsert®, Holding your world together®, Hydra®, Interlock®, Klamp-Tite®, KlampTite KTR®, Kvex®, Maxlok®, Monobolt®, Monobulb®, Neobolt®, Nutsert®, Nutsert SQ®, Portariv®, Rivmatic®, Rivscrew®, Speed Fastening®, Squaresert®, Stavex®, Supersert®, Thin Sheet Nutsert®, Titan®, T-Lok®, TLR®, TSN®, TX2000®, Versa-Nut®, Viking® and Viking 360® are trademarks of Avdel UK Limited. Infastech™ and Our Technology, Your Success™ are trademarks of Infastech Intellectual Properties Pte Ltd. The names and logos of other companies mentioned herein may be trademarks of their respective owners. This document is for informational purposes only. Infastech makes no warranties, expressed or implied, in this document. Data shown is subject to change without prior notice as a result of continuous product development and improvement policy. Your local Avdel representative is at your disposal should you need to confirm latest information.