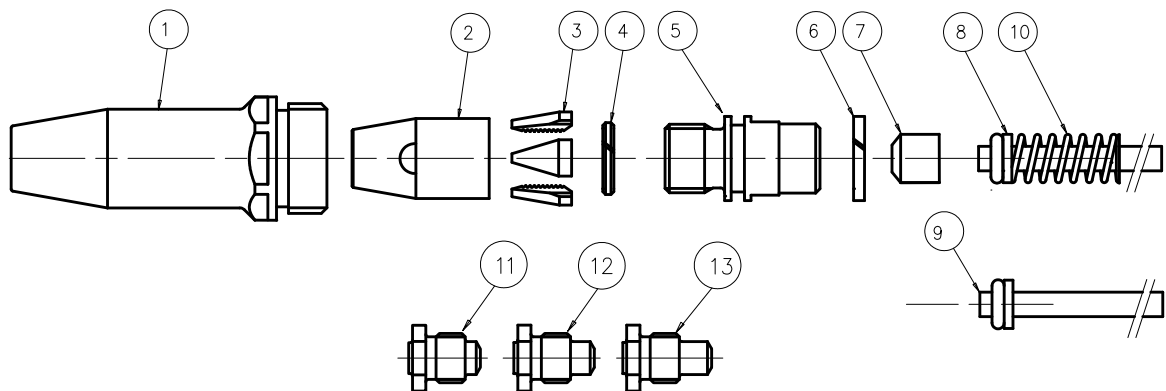


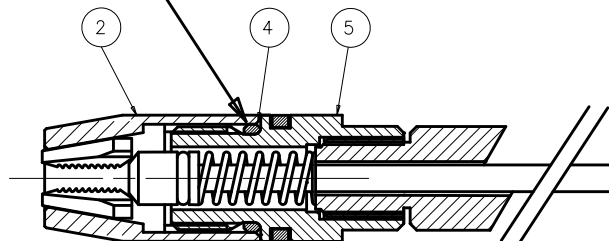
# Testata per eRIV


1	71603-02001	Canotto
2	71210-15902	Sede ganasce
3	71210-15001	Ganasce (3 pz)
4	07340-00327	O ring di bloccaggio
5	71603-02002	Adattatore pistone
6	71603-02015	Anello di bloccaggio
7	71603-02016	Allargatore ganasce
8	71603-02004	Tubo guida
9	71603-02010	Tubo guida (foro piccolo)
10	71603-02005	Molla
11	71603-02053	Nasello 1/8"
12	71603-02054	Nasello 5/32"
13	71603-02055	Nasello 3/16"



**Importante!**

Assicurarsi che la sede ganasce (2) sia ben serrata sull'adattatore (5) incapsulato o ring di bloccaggio (4)



	ISSUE	A					
	C.N.	12/260					
	Avdel UK Limited Pacific House, 2 Swiftfields, Watchmead Industrial Estate, Welwyn Garden City, Hertfordshire, AL7 1LY Registered in England: No. 315076			DRAWING NUMBER	07900-01035		