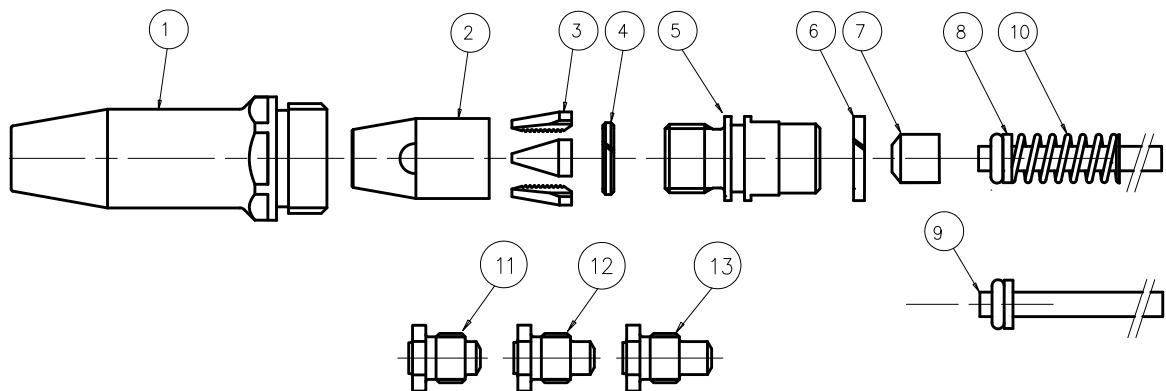


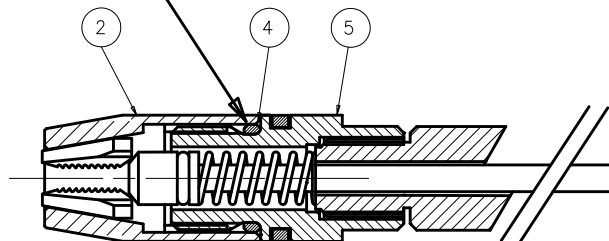
Equipment de pose eRIV


1	71603-02001	Carter de nez
2	71210-15902	Carter porte mâchoires
3	71210-15001	Mâchoires (jeu de 3)
4	07340-00327	Bague de serrage
5	71603-02002	Adaptateur de piston
6	71603-02015	Bague de guidage
7	71603-02016	Porte mâchoires
8	71603-02004	Tube Guide
9	71603-02010	Tube guide (alésage étroit)
10	71603-02005	Ressort
11	71603-02053	Nez de pose $\varnothing 3.2\text{mm}$
12	71603-02054	Nez de pose $\varnothing 4.0\text{mm}$
13	71603-02055	Nez de pose $\varnothing 4.8\text{mm}$



IMPORTANT!

Assurez vous que le carter porte mâchoires (2) est bien serré sur l'adaptateur de pistone (5) et qu'il coiffe la bague de serrage (4).



	ISSUE	A					
	C.N.	12/260					
	Avdel UK Limited Pacific House, 2 Swiftfields, Watchmead Industrial Estate, Welwyn Garden City, Hertfordshire, AL7 1LY Registered in England: No. 315076			DRAWING NUMBER	07900-01035		